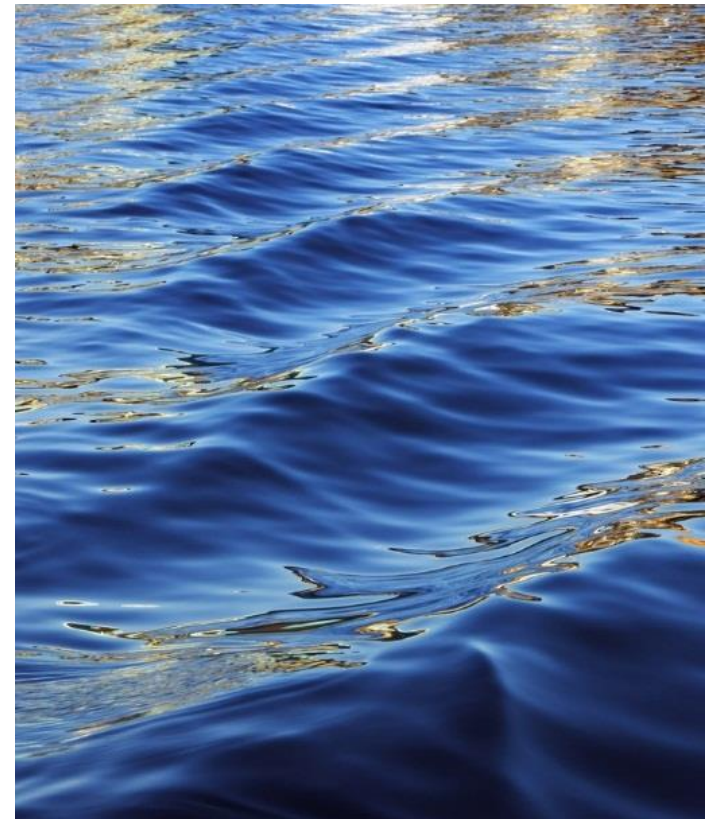




# MDP Line 16 Replacement Pipeline Construction Update

July 28, 2022



**Beaumont-Cherry Valley Water District**

Proudly Serving the City of Beaumont and Community of Cherry Valley for Over 100 Years

# MDP Line 16 Replacement Pipeline Project

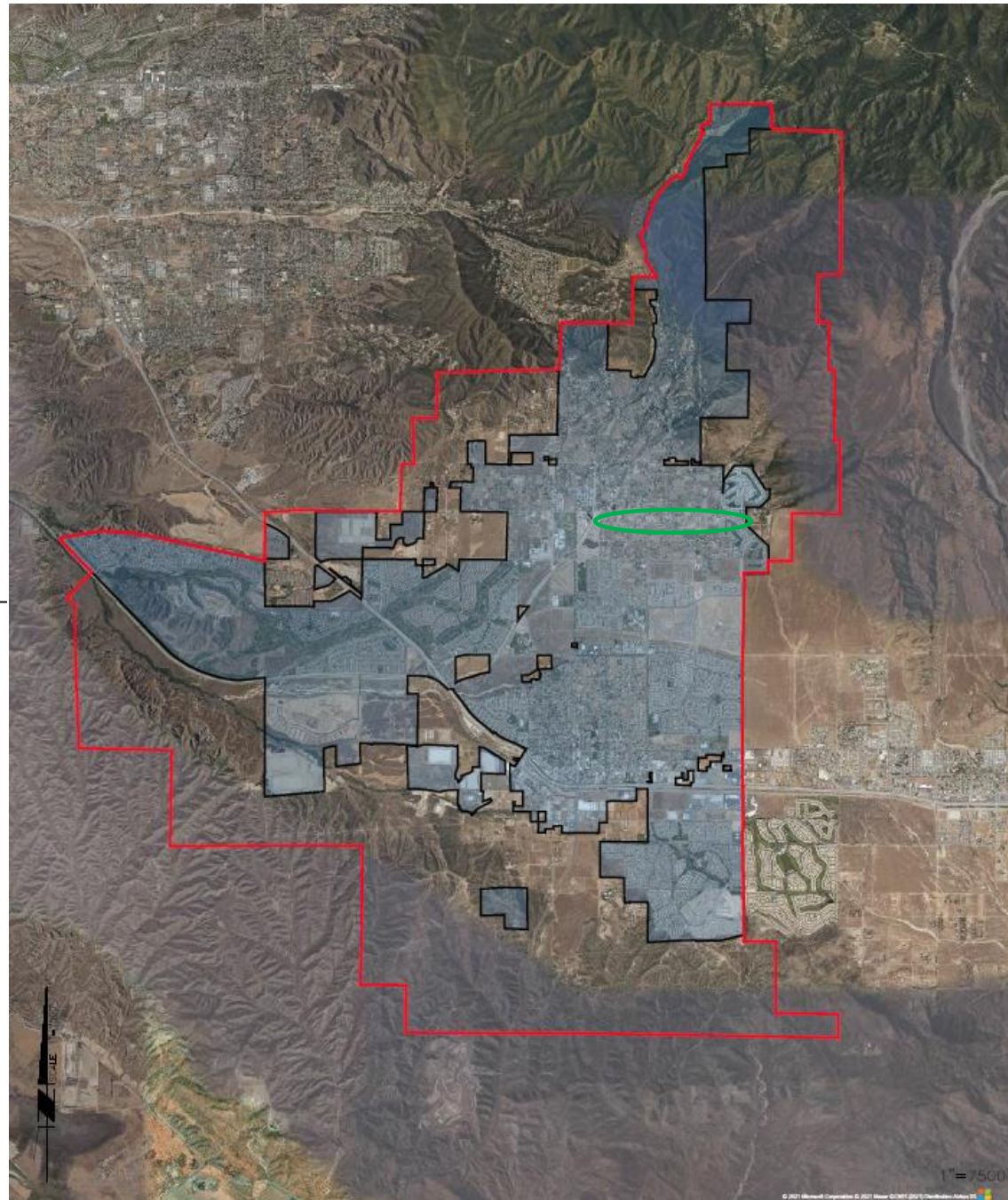
## PROJECT OBJECTIVE/SUMMARY

- PIPELINE REPLACEMENT PROJECT TO RE-ALIGN EXISTING DISTRICT FACILITIES TO AVOID INTERFERENCE WITH THE MDP LINE 16 STORM DRAIN PROJECT
- REPLACEMENT PIPELINES LOCATED WITHIN GRAND AVENUE FROM BCVWD NCRF PH II (WEST) TO BELLFLOWER ST. (EAST)
- BCVWD HAS WORKED COOPERATIVELY WITH RCFC&WCD TO COMPLETE CONSTRUCTION
- REPLACING 9 SEGMENTS OF EXISTING PIPELINE WITHIN GRAND AVENUE THAT WERE IN CONFLICT WITH THE ALIGNMENT OF THE STORM DRAIN
  - 2,820 LF – NEW 8” DIP
  - 3,315 LF – NEW 12” DIP
- REPLACED PIPELINE SEGMENTS WHICH WERE IDENTIFIED IN THE DISTRICT’S CAPITAL IMPROVEMENT PLAN/MASTER PLAN

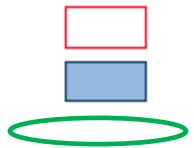
**BEAUMONT CHERRY VALLEY  
WATER DISTRICT**

**SERVICE BOUNDARY AND SPHERE OF  
INFLUENCE**

**MDP LINE 16 REPLACEMENT  
PIPELINE PROJECT VICINITY**

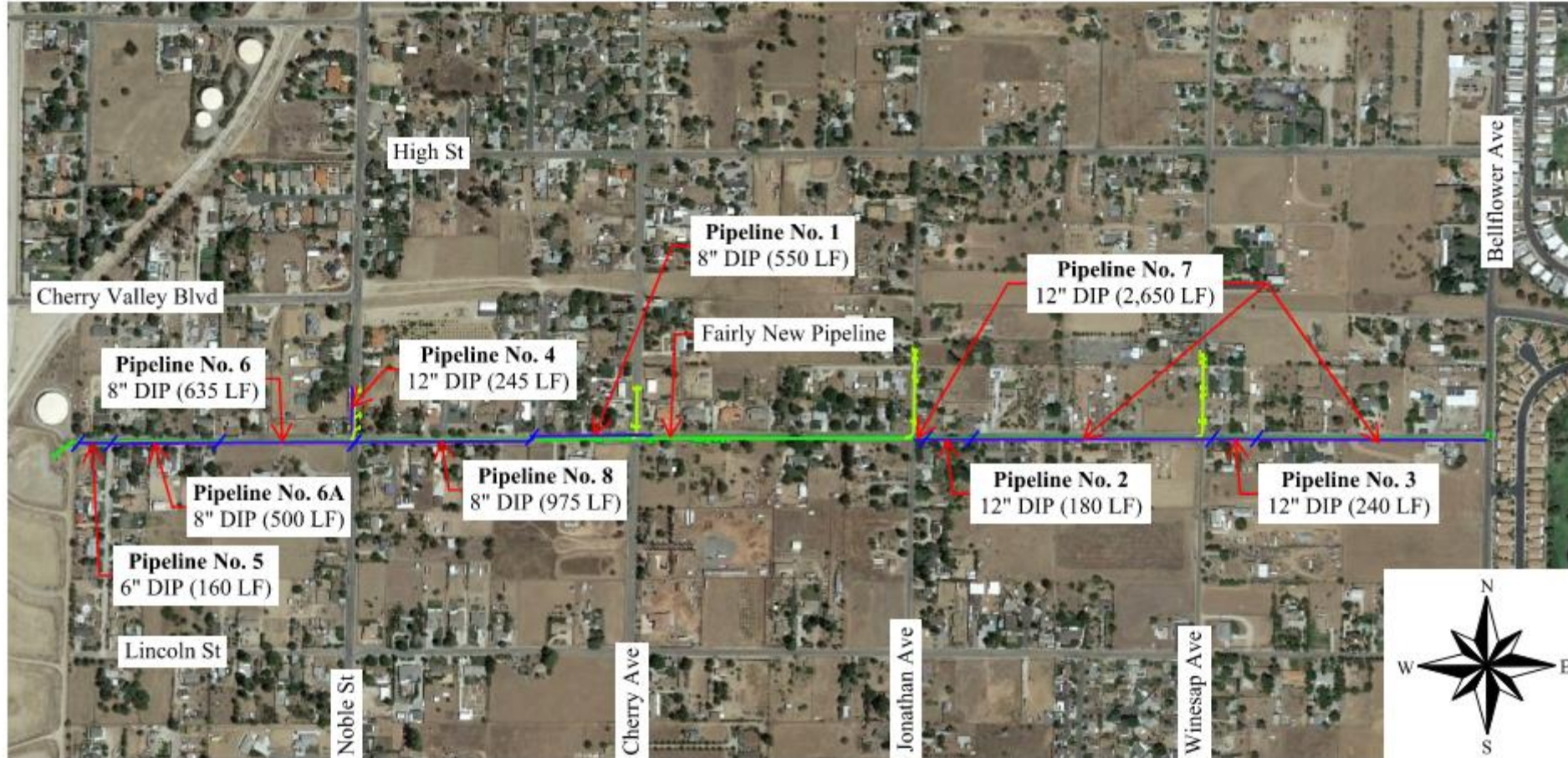


SPHERE OF INFLUENCE  
SERVICE BOUNDARY  
LOCATION OF PROJECT





# MDP Line 16 Replacement Pipeline PROJECT LOCATION





# MDP Line 16 Replacement Pipeline – Under Construction

EL MONTE DRIVE





# MDP Line 16 Replacement Pipeline – Under Construction





# MDP Line 16 Replacement Pipeline – Under Construction





# MDP Line 16 Replacement Pipeline – Under Construction





# MDP Line 16 Replacement Pipeline – Original Pipeline





# MDP Line 16 Replacement Pipeline – Pavement Progress

LOOKING WEST  
BETWEEN  
BELLFLOWER AND  
WINESAP





# Questions

