



**BEAUMONT CHERRY VALLEY WATER DISTRICT  
AGENDA  
REGULAR MEETING OF THE BOARD OF DIRECTORS  
Wednesday, January 20, 2010 at 7:00 PM  
560 Magnolia Avenue, Beaumont, CA 92223**

---

**CALL TO ORDER, PRESIDENT BALL**

**PLEDGE OF ALLEGIANCE, VICE PRESIDENT PARKS**

**INVOCATION, DIRECTOR WOLL**

**ROLL CALL, JULIE SALINAS**

**PUBLIC INPUT**

**PUBLIC COMMENT:** Anyone wishing to address the Board of Directors on any matter not on the agenda of this meeting may do so now. Anyone wishing to speak on an item on the agenda may do so at the time the Board considers that item. All persons wishing to speak must fill out a "Request to Speak" form and give it to the Secretary at the beginning of the meeting. The forms are available on the table at the back of the room. There is a three (3) minute limit on public comments. Sharing or passing time to another speaker is not permitted. Please do not repeat what was said by a previous speaker except to note agreement with that speaker. Thank you for your cooperation.

**PRESENTATION BY GENERAL MANAGER OF THE SAN GORGONIO PASS  
WATER AGENCY REGARDING PROPOSED CAPACITY FEE\*\***

**ACTION ITEMS**

**1. ADOPTION OF THE AGENDA**

PARKS	M	S	A	N
ROSS	M	S	A	N
WOLL	M	S	A	N
BALL	M	S	A	N

**2. FINANCIAL REPORTS**

a. Bills for Consideration\*\*

Board Action

December 2009

The Board will take action on the Bills for Consideration taking into account the recommendations of the Finance and Audit Committee.

PARKS	M	S	A	N
ROSS	M	S	A	N
WOLL	M	S	A	N
BALL	M	S	A	N

b. Invoices for Payment Approval\*\*

Board Action

The Board will take action on the invoices for payment taking into account the recommendations of the Finance and Audit Committee.

PARKS	M	S	A	N
ROSS	M	S	A	N
WOLL	M	S	A	N
BALL	M	S	A	N

c. Month End Financial Statements  
December 2009\*\*

Board Action

The Board will take action to "accept and file" the Month End Financial Statements presented by staff.

PARKS	M	S	A	N
ROSS	M	S	A	N
WOLL	M	S	A	N
BALL	M	S	A	N

**3. APPROVAL OF THE MINUTES**

a. Minutes of the Regular Meeting of December 16, 2009\*\*

ROSS	M	S	A	N
PARKS	M	S	A	N
WOLL	M	S	A	N
BALL	M	S	A	N

**4. ACCEPTANCE OF RESIGNATION OF DIRECTOR NIKI MAGEE FROM THE BEAUMONT CHERRY VALLEY WATER DISTRICT BOARD EFFECTIVE JANUARY 6, 2010 AND DETERMINE THE PROPER COURSE OF ACTION FOR FILLING THE VACANCY \*\***

PARKS	M	S	A	N
ROSS	M	S	A	N
WOLL	M	S	A	N
BALL	M	S	A	N

**5. VARIANCE REQUEST FROM DAVID THOMAS, 1026 WELLWOOD AVENUE ON OUTSTANDING BALANCE\*\***

PARKS	M	S	A	N
ROSS	M	S	A	N
WOLL	M	S	A	N
BALL	M	S	A	N

**6. ACCEPTANCE OF THE NOBLE CREEK ARTIFICIAL RECHARGE FACILITY GROUND WATER MONITORING REPORT (JULY 16 TO SEPT 30, 2009) \*\***

ROSS	M	S	A	N
PARKS	M	S	A	N
WOLL	M	S	A	N
BALL	M	S	A	N

**7. VARIANCE REQUEST FROM CHERRY VALLEY WATER COMPANY ON OUT-OF-THE DISTRICT RATES\*\***

ROSS	M	S	A	N
PARKS	M	S	A	N
WOLL	M	S	A	N
BALL	M	S	A	N

**8. APPROVAL OF RESOLUTION 2010-01, A RESOLUTION OF THE BOARD OF DIRECTORS OF THE BEAUMONT CHERRY VALLEY WATER DISTRICT DECLARING THE OFFICIAL INTENT TO BE REIMBURSED FOR CERTAIN CAPITAL EXPENDITURES FROM THE PROCEEDS OF INDEBTEDNESS\*\***

ROSS	M	S	A	N
PARKS	M	S	A	N
WOLL	M	S	A	N
BALL	M	S	A	N

**9. REPORTS FOR DISCUSSION AND POSSIBLE ACTION**

**(a) Ad hoc Committees**

**(b) General Manager**

- Recycled Water Project
- LAFCO Annexation
- 2009 Audit

**(c) Directors**

- Dr. Blair Ball
- Stella Parks
- Ken Ross
- Ryan Woll

**(d) Legal Counsel**

**10. ANNOUNCEMENTS**

- Regular Board Meeting will be held on February 10, 2010

**ACTION LIST**

---

---

**11. CLOSED SESSION CONFERENCE WITH LEGAL COUNSEL-**

- A. Closed Session will be held to confer with legal counsel on ONE matter of potential litigation pursuant to subdivision (c) of Government Code section 54956.9-ONE MATTER-Potential Litigation**
- B. Closed Session will be held to confer with legal counsel on one matter of pending litigation pursuant to subdivision (a) of Government Code Section 54956.9. Daniel Slawson and Arlene Slawson vs Beaumont Cherry Valley Water District, a public agency, Case No RIC 533149-Riverside Superior Court.**
- C. Closed Session will also be held regarding a personnel matter pursuant to Government Code Section 54957- Interim General Manager-Performance Review.**

**12. OPEN SESSION- REPORT ON CLOSED SESSION**

### 13. ADJOURNMENT

PARKS	M	S	A	N
ROSS	M	S	A	N
WOLL	M	S	A	N
BALL	M	S	A	N

\*\* Information included in the agenda packet

**Assistance for the Disabled:** If you are disabled in any way and need accommodation to participate in the meeting, please call Blanca Marin Executive Assistant, at (951) 845-9581 Ext. 23 for assistance so the necessary arrangements can be made.

The agenda material for this meeting is available to the public at the District's Administrative Office which is located at 560 Magnolia Avenue, Beaumont, CA 92223. If any additional material related to an open session agenda item is distributed to all or a majority of the board of directors after this agenda is posted, such material will be made available for immediate inspection at the same location.

# **Financing Supplemental Water Supplies to Meet Future Demands Proposed Capacity Fee Component**

San Geronio Pass Water Agency  
January 2010

## **What Studies Show**

- Regional needs include:
  - More supplemental water (above 17,300 AF)
  - More storage in groundwater basins
  - Completion of EBX 2 plus additional conveyance
- Estimated cost—approximately \$500 million
- Ad valorem taxes will pay for EBX 2 which is needed for existing users
- Funding needed for the \$400 million
- SWP supplies have reduced reliability until Delta is fixed.

## **Basic Regional Requirements**

- Demand at build-out - 2050
- New water—32,000 AF (at 80% long-term reliability) of additional water required.
- New conveyance capacity—41 cfs after EBX 2 is completed (EBX 2 provides SGPWA a total of 48 cfs).
- New storage—new recharge facilities required in Beaumont and Cabazon Basins.

## **Projected Costs to Meet Future Needs**

- New supplemental water--\$176 million.
- New facilities—\$230 million (includes new conveyance plus recharge facilities for storage).
- Escalation Cost—To be determined.
- In today's dollars, this is about \$400 million for regional water and regional facilities in addition to about \$100 million for EBX 2.

# QUESTION:

How to pay for it???

## **What Governs SGPWA's Decisions?**

- Fairness
  - Existing taxpayers and ratepayers to fund facilities required to meet current needs.
  - Future users pay for new water and new facilities required to meet their needs.
- Prudent and reasonable financing plan that spreads costs equitably.
- Prudent, accurate, reasonable water planning documentation.
- Prudent and reasonable implementation plan.

## **Purpose of Proposed Fee**

- To provide a source of funding for the share of new water and new facilities attributed to new users (2010 and beyond).
- Proposed fee has three components:
  - New supplemental water (about \$3000 per EDU) (\$176 Million)
  - New facilities (about \$4000 per EDU) (\$230 Million)
  - Finance Cost (to be determined)

## **UWMP 101**

- Wholesale and retail water agencies required to produce Urban Water Management Plans in 2010.
- Wholesale UWMPs must identify realistic amount of supplemental water available (including reliability).
- Retail agencies need to coordinate with this number in their UWMPs.



## **UWMP 101, cont.**

- If additional water supplies are identified and a funding plan presented, these supplies may be included in the UWMP.
- If no realistic funding plan is included, any identified new supplies may not be included.
- Agency's goal: To present a new water source and funding plan to augment 17,300 AF in its 2010 UWMP.

## **UWMP 101, cont.**

- UWMPs can be an obstacle to meeting new demand if they cannot identify realistic water supplies to meet new demands.
- Agency's goal is to meet projected regional demand.

## **Financial Plan**

- The proposed capacity fee is a key element of financing the \$400 million in new water and infrastructure because it is directly related to new demand.
- Alternatives to capacity fee:
  - Water rates
  - Ad valorem tax (restricted use)
  - General tax revenues (1%)
  - SWP bond refinancing

## **Implementation of Proposed Fee**

- Cities, counties, and retailers have direct authority over development.
- Cities and County have land planning authority to condition development on verification of adequate water supplies.
- Retail water agencies issue “will serve” letters as part of this process.
- Agency wishes to work with cities, the County, and retailers to provide the opportunity to condition development and water service on proof of payment of the capacity fee as part of the entitlement process.

## **Collection Details**

- Agency/city, county, retailer cooperative agreements conditioning development and water service on payment of capacity fee to Agency.
- We are working at the staff level on details of these agreements.
- When details are worked out, we will present them to you prior to asking you to vote on them.

## **Existing Fees for New Water**

- For retailers who collect fees for new water, developers should get credits for this-i.e., we don't want to collect twice for the same thing.
- Retailers can decide if they want to keep this line item in their fees if the Agency starts collecting money too.
  - If so, credits would be issued.
  - If not, retailers' fees could be reduced.

## **Current Retail Fees for New Water**

- BCVWD charges a fee for new imported supplemental water (\$1225 per EDU).
- Banning charges a fee for new imported supplemental water (\$1850 per EDU).
- YVWD has no fee for new supplemental water. Relying on future recycled water.
- Current fees differ and do not reflect increased cost of water rights.
- There would be a potential shortfall in these revenues without SGPWA capacity fees.

**This is a regional issue that calls for coordination and consistency.**

## **Alternatives to the Proposed Fee**

- Other revenue sources
  - AV taxes not available.
  - 1% funding not adequate.
  - Water rates – complex and user sensitive.
  - Refinancing – not adequate.
- Do not purchase the additional water or construct the required facilities (UWMP would reflect this).
- Retailers or cities could generate funds through other means if they do not want to charge developers.

## Next Steps

- Discussions with retailers on implementation
- Meetings with boards of retail agencies
- Meetings with developers
- Agency board implementation workshop
- Meetings with land use planning agencies
- More details on implementation to retailers
- Agency board action

**BEAUMONT-CHERRY VALLEY WATER DISTRICT**  
**Check Register-Summary-Bank**



AP5090

Page : 1

Date : Jan 04, 2010

Time : 8:12 am

Vendor : A&A FENCE To ZETLMAIER  
 Cheque Dt. : 01-Dec-2009 To 31-Dec-2009  
 Bank : 7 - ACCOUNTS PAYABLE

Seq : Cheque No. Status : All  
 Medium : M=Manual C=Computer E=EFT-PA

Check #	Check Date	Vendor	Vendor Name	Status	Batch	Medium	Amount
39995	03-Dec-2009	ADVANTAGES	ADVANTAGE SEPTIC SYSTEMS	Issued	425	C	325.00
39996	03-Dec-2009	ALSCO	ALSCO	Issued	425	C	65.00
39997	03-Dec-2009	ARAMARK	ARAMARK REFRESHMENT SERVICES	Issued	425	C	158.32
39998	03-Dec-2009	AVAYA	AVAYA INC	Issued	425	C	120.38
39999	03-Dec-2009	B ACE HOME	BEAUMONT DO IT BEST HOME CENTER	Issued	425	C	167.56
40000	03-Dec-2009	B76	BEAUMONT 76	Issued	425	C	201.68
40001	03-Dec-2009	BASICCHEMI	BASIC CHEMICAL SOLUTIONS LLC	Issued	425	C	3,856.23
40002	03-Dec-2009	CITYOFB	CITY OF BEAUMONT	Issued	425	C	52.29
40003	03-Dec-2009	CLEANBYDES	CLEAN BY DESIGN INC.	Issued	425	C	1,110.00
40004	03-Dec-2009	EDISON	SOUTHERN CALIFORNIA EDISON	Issued	425	C	9,078.88
40005	03-Dec-2009	ESBABCOCK	ES BABCOCK	Issued	425	C	805.00
40006	03-Dec-2009	FREEMANOFF	FREEMAN OFFICE PRODUCTS	Issued	425	C	63.89
40007	03-Dec-2009	GABRIELEQU	GABRIEL EQUIPMENT	Issued	425	C	459.62
40008	03-Dec-2009	INLANDWATE	INLAND WATER WORKS	Issued	425	C	1,450.09
40009	03-Dec-2009	KVSPAIN TAN	KV'S PAINT AND DECORATING	Issued	425	C	106.25
40010	03-Dec-2009	MAGEENIKI	MAGEE, NIKI	Issued	425	C	400.00
40011	03-Dec-2009	MCCROMETEI	MCCROMETER	Issued	425	C	937.49
40012	03-Dec-2009	NAPAAUTOPA	NAPA AUTO PARTS	Issued	425	C	37.28
40013	03-Dec-2009	PRESSETER	PRESS ENTERPRISE	Issued	425	C	1,058.40
40014	03-Dec-2009	PRESTIGEMO	PRESTIGE MOBILE DETAIL	Issued	425	C	336.00
40015	03-Dec-2009	RAINFORREN	RAIN FOR RENT	Issued	425	C	2,147.09
40016	03-Dec-2009	SIMSWELDIN	SIMS WELDING SUPPLY CO INC	Issued	425	C	1,109.16
40017	03-Dec-2009	STAPLES	STAPLES BUSINESS ADVANTAGE	Issued	425	C	403.14
40018	03-Dec-2009	STMP000770	TBU INC.	Issued	425	C	687.04
40019	03-Dec-2009	STMP000771	MATICH CORP	Issued	425	C	257.96
40020	03-Dec-2009	STMP000772	HARDESTY, ROBERT	Issued	425	C	138.03
40021	03-Dec-2009	TERMINIX	TERMINIX	Issued	425	C	94.00
40022	03-Dec-2009	Z&LPAVING	Z&L PAVING	Issued	425	C	14,405.50
40023	10-Dec-2009	ARCO	ARCO GASPRO PLUS	Issued	429	C	4,418.01
40024	10-Dec-2009	B ACE HOME	BEAUMONT DO IT BEST HOME CENTER	Issued	429	C	202.89
40025	10-Dec-2009	CAL-MESA	CAL-MESA STEEL SUPPLY INC	Issued	429	C	87.00
40026	10-Dec-2009	EDISON	SOUTHERN CALIFORNIA EDISON	Issued	429	C	103,082.68
40027	10-Dec-2009	ESBABCOCK	ES BABCOCK	Issued	429	C	8,435.00
40028	10-Dec-2009	FEDEX	FEDEX	Issued	429	C	38.11
40029	10-Dec-2009	FREEMANOFF	FREEMAN OFFICE PRODUCTS	Issued	429	C	929.79
40030	10-Dec-2009	HOMEDEPOT	HOME DEPOT CREDIT SERVICES	Issued	429	C	623.14
40031	10-Dec-2009	INLANDWATE	INLAND WATER WORKS	Issued	429	C	1,521.93
40032	10-Dec-2009	KVSPAIN TAN	KV'S PAINT AND DECORATING	Issued	429	C	52.69
40033	10-Dec-2009	NAPAAUTOPA	NAPA AUTO PARTS	Issued	429	C	315.30
40034	10-Dec-2009	NOBELSYSTE	NOBEL SYSTEMS	Issued	429	C	4,500.00
40035	10-Dec-2009	ONLINE INF	ONLINE INFORMATION SERVICES	Issued	429	C	148.80
40036	10-Dec-2009	RIOSTONE	RIO STONE BUILDING MATERIALS	Issued	429	C	177.25
40037	10-Dec-2009	SGPWA	SAN GORGONIO PASS WATER AGENCY	Issued	429	C	362,448.72
40038	10-Dec-2009	STAPLES	STAPLES BUSINESS ADVANTAGE	Issued	429	C	361.90
40039	10-Dec-2009	STELLAPARK	PARKS, STELLA	Issued	429	C	800.00
40040	10-Dec-2009	STMP000773	YU, THOMAS	Issued	429	C	398.96
40041	10-Dec-2009	WOLLR000	WOLL, RYAN	Issued	429	C	200.00
40042	17-Dec-2009	ACTIONTRUE	ACTION TRUE VALUE HARDWARE	Issued	436	C	651.91
40043	17-Dec-2009	AIR&HOSESO	AIR & HOSE SOURCE INC.	Issued	436	C	116.21
40044	17-Dec-2009	ALSCO	ALSCO	Issued	436	C	65.00
40045	17-Dec-2009	AQMD	AQMD	Issued	436	C	804.42
40046	17-Dec-2009	B ACE HOME	BEAUMONT DO IT BEST HOME CENTER	Issued	436	C	105.46
40047	17-Dec-2009	B76	BEAUMONT 76	Issued	436	C	283.79
40048	17-Dec-2009	BTIRE	BEAUMONT TIRE	Issued	436	C	419.49
40049	17-Dec-2009	BUNIQUELO	BEAUMONT BUNIQUE FLOWERS	Issued	436	C	80.00
40050	17-Dec-2009	C&BCRUSHIN	C&B CRUSHING INC	Issued	436	C	40.00

**BEAUMONT-CHERRY VALLEY WATER DISTRICT**  
**Check Register-Summary-Bank**



**AP5090**

**Page : 2**

**Date :** Jan 04, 2010

**Time :** 8:12 am

**Vendor :** A&A FENCE To ZETLMAIER  
**Cheque Dt. :** 01-Dec-2009 To 31-Dec-2009  
**Bank :** 7 - ACCOUNTS PAYABLE

**Seq :** Cheque No. **Status :** All  
**Medium :** M=Manual C=Computer E=EFT-PA

Check #	Check Date	Vendor	Vendor Name	Status	Batch	Medium	Amount
40051	17-Dec-2009	C-18, INC	C-18 INC.	Issued	436	C	32.08
40052	17-Dec-2009	CR&RINCORP	CR&R INC	Issued	436	C	225.15
40053	17-Dec-2009	CVAUTO	CHERRY VALLEY AUTOMOTIVE	Issued	436	C	43.75
40054	17-Dec-2009	CVNURSERY	CHERRY VALLEY NURSERY	Issued	436	C	4.08
40055	17-Dec-2009	DAVINCI	DA VINCI PRINTING & BLUEPRINTS	Issued	436	C	22.02
40056	17-Dec-2009	DEPHEALTH	CA. DEPT OF PUBLIC HEALTH	Issued	436	C	90.00
40057	17-Dec-2009	DEPHEALTH	CA. DEPT OF PUBLIC HEALTH	Issued	436	C	55.00
40058	17-Dec-2009	DEPTOFFORE	DEPT. OF FORESTRY & FIRE PROTECTION	Issued	436	C	1,342.32
40059	17-Dec-2009	FEDEX	FEDEX	Issued	436	C	89.40
40060	17-Dec-2009	FREEMANOFF	FREEMAN OFFICE PRODUCTS	Issued	436	C	110.37
40061	17-Dec-2009	GASCO	THE GAS COMPANY	Issued	436	C	9.53
40062	17-Dec-2009	GEOSCIENCE	GEOSCIENCE	Issued	436	C	1,858.00
40063	17-Dec-2009	HIGHLANDSP	HIGHLAND SPRINGS EXPRESS LUBE	Issued	436	C	618.21
40064	17-Dec-2009	HUDECS	HUDECS COMPUTER CONSULTING	Issued	436	C	3,849.98
40065	17-Dec-2009	INLANDWATE	INLAND WATER WORKS	Issued	436	C	3,426.30
40066	17-Dec-2009	KVSPAINTEAN	KV'S PAINT AND DECORATING	Issued	436	C	48.93
40067	17-Dec-2009	MIKEMCGEOR	MIKE MCGEORGE GOPHER CONTROL	Issued	436	C	250.00
40068	17-Dec-2009	PARSONS	PARSONS WATER & INFRASTRUCTURE INC.	Issued	436	C	102,422.43
40069	17-Dec-2009	PRESTIGEMO	PRESTIGE MOBILE DETAIL	Issued	436	C	352.00
40070	17-Dec-2009	RAINFORREN	RAIN FOR RENT	Issued	436	C	1,524.47
40071	17-Dec-2009	REDWINE	REDWINE AND SHERRILL	Issued	436	C	9,094.83
40072	17-Dec-2009	RYLANDHOME	RYLAND HOMES	Issued	436	C	31,393.89
40073	17-Dec-2009	STAPLES	STAPLES BUSINESS ADVANTAGE	Issued	436	C	152.90
40074	17-Dec-2009	STMP000774	BREED, JESSICA	Issued	436	C	2,014.00
40075	17-Dec-2009	STMP000775	TURNER, WENDELL, (AGENT)	Issued	436	C	159.48
40076	17-Dec-2009	TIMEWARNER	TIME WARNER CABLE	Issued	436	C	26.24
40077	17-Dec-2009	TOMLARA	TOM LARA	Issued	436	C	3,950.00
40078	17-Dec-2009	UNDERGROU	UNDERGROUND SERVICE ALERT	Issued	436	C	103.50
40079	17-Dec-2009	VERIZON	VERIZON	Issued	436	C	153.34
40080	17-Dec-2009	VERIZON	VERIZON	Issued	436	C	64.80
40081	17-Dec-2009	VERIZONBUS	VERIZON BUSINESS FIOS	Issued	436	C	119.99
40082	17-Dec-2009	WASTEMANA	WASTE MANAGEMENT	Issued	436	C	237.36
40083	17-Dec-2009	WASTEMANA	WASTE MANAGEMENT	Issued	436	C	118.95
40084	17-Dec-2009	WELLSFARG	WELLS FARGO REMITTANCE CENTER	Issued	436	C	1,175.32
40085	31-Dec-2009	ACPROPANE	AC PROPANE	Issued	449	C	658.13
40086	31-Dec-2009	ALSCO	ALSCO	Issued	449	C	65.00
40087	31-Dec-2009	ARAMARK	ARAMARK REFRESHMENT SERVICES	Issued	449	C	288.05
40088	31-Dec-2009	AVAYA	AVAYA INC	Issued	449	C	120.38
40089	31-Dec-2009	B ACE HOME	BEAUMONT DO IT BEST HOME CENTER	Issued	449	C	684.75
40090	31-Dec-2009	B ACE HOME	BEAUMONT DO IT BEST HOME CENTER	Issued	449	C	82.69
40091	31-Dec-2009	BLAIRBALL	BALL, BLAIR	Issued	449	C	1,600.00
40092	31-Dec-2009	CLEANBYDES	CLEAN BY DESIGN INC.	Issued	449	C	1,110.00
40093	31-Dec-2009	COFRIVASSE	COUNTY OF RIVERSIDE ASSESSOR COUNT	Issued	449	C	15.00
40094	31-Dec-2009	CONTROLVAL	CONTROL VALVE SYSTEMS INC	Issued	449	C	2,626.97
40095	31-Dec-2009	CROWLEYCO	CROWLEY COMPANY INC.	Issued	449	C	469.80
40096	31-Dec-2009	DAVINCI	DA VINCI PRINTING & BLUEPRINTS	Issued	449	C	44.92
40097	31-Dec-2009	EDISON	SOUTHERN CALIFORNIA EDISON	Issued	449	C	28,001.92
40098	31-Dec-2009	ESBABCOCK	ES BABCOCK	Issued	449	C	1,460.00
40099	31-Dec-2009	FEDEX	FEDEX	Issued	449	C	21.71
40100	31-Dec-2009	GRAINGER	GRAINGER	Issued	449	C	52.47
40101	31-Dec-2009	HIGHLANDSP	HIGHLAND SPRINGS EXPRESS LUBE	Issued	449	C	492.25
40102	31-Dec-2009	HUDECS	HUDECS COMPUTER CONSULTING	Issued	449	C	2,945.69
40103	31-Dec-2009	IDEARCMEDI	IDEARC MEDIA CORP.	Issued	449	C	51.50
40104	31-Dec-2009	INFODATALI	INFO DATA LINK	Issued	449	C	513.95
40105	31-Dec-2009	INLANDWATE	INLAND WATER WORKS	Issued	449	C	581.14
40106	31-Dec-2009	METROCALL	USA MOBILITY WIRELESS INC.	Issued	449	C	24.60

**BEAUMONT-CHERRY VALLEY WATER DISTRICT**  
**Check Register-Summary-Bank**



AP5090

Page : 3

Date : Jan 04, 2010

Time : 8:12 am

Vendor : A&A FENCE To ZETLMAIER  
 Cheque Dt. : 01-Dec-2009 To 31-Dec-2009  
 Bank : 7 - ACCOUNTS PAYABLE

Seq : Cheque No. Status : All  
 Medium : M=Manual C=Computer E=EFT-PA

Check #	Check Date	Vendor	Vendor Name	Status	Batch	Medium	Amount
40107	31-Dec-2009	PACIFICALA	PACIFIC ALARM	Issued	449	C	202.00
40108	31-Dec-2009	PATSPOTS	PAT'S POTS	Issued	449	C	310.00
40109	31-Dec-2009	PITNEYBOW	EASYPERMIT POSTAGE	Issued	449	C	2,184.61
40110	31-Dec-2009	PRESTIGEMO	PRESTIGE MOBILE DETAIL	Issued	449	C	448.00
40111	31-Dec-2009	RAINFORREN	RAIN FOR RENT	Issued	449	C	3,597.23
40112	31-Dec-2009	ROSSK000	ROSS, KEN	Issued	449	C	800.00
40113	31-Dec-2009	SGPWA	SAN GORGONIO PASS WATER AGENCY	Issued	449	C	81,152.00
40114	31-Dec-2009	STAPLES	STAPLES BUSINESS ADVANTAGE	Issued	449	C	734.05
40115	31-Dec-2009	STELLAPARK	PARKS, STELLA	Issued	449	C	400.00
40116	31-Dec-2009	STMP000776	INLAND VALLEY CONSTRUCTION INC	Issued	449	C	658.01
40117	31-Dec-2009	STMP000777	KARAKI, JOSEPH	Issued	449	C	535.37
40118	31-Dec-2009	STMP000778	MOODY CONSTRUCTION	Issued	449	C	453.62
40119	31-Dec-2009	STMP000779	BEADOR CONSTRUCTION CO INC	Issued	449	C	554.07
40120	31-Dec-2009	STMP000780	CITY OF BEAUMONT	Issued	449	C	5,456.87
40121	31-Dec-2009	STMP000781	CITY OF BEAUMONT	Issued	449	C	1,805.02
40122	31-Dec-2009	STMP000782	MC CULLY, LYNN	Issued	449	C	167.34
40123	31-Dec-2009	SWRCB	STATE WATER RESOURCES CONTROL BOA	Issued	449	C	1,452.00
40124	31-Dec-2009	TERMINIX	TERMINIX	Issued	449	C	233.00
40125	31-Dec-2009	USABLUEBOC	USA BLUE BOOK	Issued	449	C	98.77
40126	31-Dec-2009	VADIM	VADIM	Issued	449	C	23,888.50
40127	31-Dec-2009	VERIZON	VERIZON	Issued	449	C	621.10
40128	31-Dec-2009	VERIZON	VERIZON	Issued	449	C	194.42
40129	31-Dec-2009	VERIZON	VERIZON	Issued	449	C	593.52
40130	31-Dec-2009	VERIZON	VERIZON	Issued	449	C	550.07
40131	31-Dec-2009	VERIZONWIR	VERIZON WIRELESS	Issued	449	C	426.54
40132	31-Dec-2009	WOLLR000	WOLL, RYAN	Issued	449	C	200.00
40133	31-Dec-2009	XEROX	XEROX CORPORATION	Issued	449	C	1,730.37

<b>Total Computer Paid :</b>	<b>867,835.75</b>	<b>Total EFT PAP :</b>	<b>0.00</b>	<b>Total Paid :</b>	<b>867,835.75</b>
<b>Total Manually Paid :</b>	<b>0.00</b>	<b>Total EFT File :</b>	<b>0.00</b>		

139 Total No. Of Cheque(s) ...



---

## **Memorandum**

---

**Date:** January 7, 2010  
**From:** Anthony Lara, Interim General Manager  
**To:** Finance and Audit Committee  
**Subject:** Invoices Pending Payment

---

Attached please find copies of the professional services invoices which are pending payment. Total amount pending approval is \$69,376.66

<b>Name</b>	<b>Invoice #</b>	<b>Amount</b>
Geoscience	15061-44	\$1,054.00
Parsons	9120011	\$54,572.66
Redwine & Sherrill	1109001	\$13,750.00
		<b><u>\$69, 376.66</u></b>

**Recommendation:** That the Finance and Audit Committee recommends approval of the attached invoices totaling \$69, 376.66

**GEOSCIENCE**

Hold for Board Approval

December 23, 2009

RECEIVED  
DEC 28 2009

Accounts Payable  
Beaumont Cherry Valley Water District  
560 Magnolia Ave.  
Beaumont, CA 92223-2258

BY: .....

**Re: Progress Billing Invoice for Geohydrologic Consulting – Noble Creek Artificial Recharge**

**Period of this Invoice: November 1 - 30, 2009**

**Invoice #15061-44**

Accounts Payable:

This letter is an invoice for the above referenced project.

**Please Pay This Amount: \$1,054**

Payable to:

GEOSCIENCE Support Services, Inc.  
P.O. Box 220  
Claremont, CA 91711

Approved for Payment  
1-5-5820-611 2  
12/29

INVOICE APPROVED  
BY: ANTHONY LARA  
DATE: 12/29/09

GEOSCIENCE SUPPORT SERVICES INCORPORATED

Ground Water Resources Development

P.O. Box 220, Claremont, CA 91711

# PARSONS

100 West Walnut Street • Pasadena, California 91124 • (626) 440-2000 • Fax: (626) 440-2630 • www.parsons.com

## I N V O I C E

NET 30 DAYS  
DECEMBER 02, 2009

CLIENT REF. : CONTRACT 8/31/81  
INVOICE NO. : 09120011  
PROJECT NO. : 723185-W  
CLIENT NO. : 72192

TO: BEAUMONT-CHERRY VALLEY WATER DISTRICT  
560 MAGNOLIA AVE.  
BEAUMONT, CA 92223-2037  
ATTN: MR. ANTHONY LARA, INTERIM GEN. MGR.

PLEASE REMIT TO:  
PARSONS WATER & INFRASTRUCTURE  
P. O. BOX 601094  
PASADENA, CA 91189-1094

FOR: BEAUMONT-CHERRY VALLEY ENGINEER

BILLING PERIOD: 10/31/09 THROUGH 11/27/09

	HOURS	CURRENT PERIOD THROUGH 11/27/09
PROFESSIONAL SERVICES		
Labor Costs:	433.7	54,263.75
ODCS without markup:		308.91
		<hr/>
SUBTOTAL:		54,572.66
		-----
TOTAL THIS INVOICE:		54,572.66
		=====

LAW OFFICES  
**REDWINE AND SHERRILL**  
 STATEMENT FOR PROFESSIONAL SERVICES

1950 MARKET STREET  
 RIVERSIDE, CALIFORNIA 92501-1720  
 TELEPHONE 951-684-2520  
 ID # 95-1979827

Invoice submitted to:  
 BEAUMONT CHERRY VALLEY WATER  
 DISTRICT  
 ATTN: TONY LARA  
 560 MAGNOLIA AVENUE  
 BEAUMONT CA 92223

December 30, 2009

In Reference To: SERVICES RENDERED DURING DECEMBER 2009

Invoice #1209001

Professional Services

	<u>Hrs/Rate</u>	<u>Amount</u>
GJG GRANITO	46.10 225.00/hr	10,372.50
GWE EAGANS	14.10 225.00/hr	3,172.50
HCC CARPELAN	1.00 205.00/hr	205.00
For professional services rendered	<u>61.20</u>	<u>\$13,750.00</u>
Additional Charges :		
\$costs advanced		140.25
Total costs		<u>\$140.25</u>
Total amount of this bill		<u>\$13,890.25</u>
Previous balance		\$9,094.83
12/22/2009 Payment/costsCheck #		(\$77.33)
12/22/2009 Payment/feesCheck #		<u>(\$9,017.50)</u>
Total payments and adjustments		(\$9,094.83)

**BEAUMONT CHERRY VALLEY WATER DISTRICT  
MONTH END FINANCIAL REPORT**



**GL5410  
Date: Jan 04, 2010**

**For Period Ending 31-Dec-2009**

<b>General Funds</b>		<b>Current Month</b>	<b>Year to Date</b>	<b>Adopted Budget</b>	<b>Budget Remaining</b>	<b>Percent to Budget</b>
<b>Revenue</b>						
<b>OPERATING REVENUE</b>						
1-4-4010-401	Domestic Water Sales	496,364	6,242,343	6,325,918	83,575	99%
1-4-4010-402	Irrigation Water Sales	60	28,185	30,000	1,815	94%
1-4-4010-403	Construction Water Sales	15,675	172,374	109,000	(63,374)	158%
1-4-4010-404	Installation Charges	3,636	237,592	280,251	42,659	85%
1-4-4010-407	Reimb. Cust. Damages/Upgrades	763	30,238	34,752	4,514	87%
1-4-4010-408	Backflow Devices	2,720	22,257	17,522	(4,735)	127%
1-4-4010-409	Reimbursement - Insurance	0	16,238	0	(16,238)	
1-4-4010-410	Returned Check Fees	80	3,340	6,000	2,660	56%
1-4-4010-411	Miscellaneous Income	789	38,244	10,000	(28,244)	382%
1-4-4010-412	Rental Income	100	1,200	1,200	0	100%
1-4-4010-414	Recharge Income (City of Banning)	15,652	151,945	85,000	(66,945)	179%
1-4-4010-441	Turn Ons	2,880	32,080	47,500	15,420	68%
1-4-4010-442	Third Notice Charge	6,030	73,380	81,000	7,620	91%
1-4-4010-443	Penalties	8,140	85,230	85,000	(230)	100%
1-4-4010-444	SGPWA Importation Charge	22	768,519	749,029	(19,490)	103%
1-4-4010-445	SCE Power Charge	106,515	1,299,664	1,101,514	(198,150)	118%
1-4-4010-446	Bonita Vista Repayment - Interest	1,894	13,605	34,000	20,395	40%
	<b>Total OPERATING REVENUE</b>	<b>661,319</b>	<b>9,216,434</b>	<b>8,997,686</b>	<b>(218,748)</b>	<b>102%</b>
<b>DISTRICT HOUSING REVENUE</b>						
1-4-4011-412	Rent - 12303 Oak Glen Road	200	1,600	0	(1,600)	
1-4-4012-412	Rent - 13695 Oak Glen Road	0	1,000	0	(1,000)	
1-4-4013-412	Rent - 13697 Oak Glen Road	200	1,000	0	(1,000)	
1-4-4014-412	Rent - 9781 Avenida Miravilla	200	1,000	0	(1,000)	
1-4-4015-515	Electric/Propane - 12303 Oak Glen Road	460	1,559	0	(1,559)	
1-4-4016-515	Electric/Propane - 13695 Oak Glen Road	474	847	0	(847)	
1-4-4017-515	Electric/Propane - 13697 Oak Glen Road	513	1,027	0	(1,027)	
1-4-4018-515	Electric/Propane - 9781 Avenida Miravilla	276	671	0	(671)	
	<b>Total DISTRICT HOUSING REVENUE</b>	<b>2,323</b>	<b>8,704</b>	<b>0</b>	<b>(8,704)</b>	<b>-</b>
	<b>Total Revenue</b>	<b>663,642</b>	<b>9,225,137</b>	<b>8,997,686</b>	<b>(227,451)</b>	<b>102%</b>

**BEAUMONT CHERRY VALLEY WATER DISTRICT  
MONTH END FINANCIAL REPORT**



**GL5410  
Date: Jan 04, 2010**

**For Period Ending 31-Dec-2009**

<b>General Funds</b>		<b>Current Month</b>	<b>Year to Date</b>	<b>Adopted Budget</b>	<b>Budget Remaining</b>	<b>Percent to Budget</b>
<b>Expense</b>						
<b>SOURCE OF SUPPLY &amp; WATER TREATMENT</b>						
1-5-5200-237	Health Insurance	4,201	48,504	55,000	6,496	88%
1-5-5200-243	Retirement/CalPERS	5,026	62,993	65,000	2,007	97%
1-5-5200-501	Labor	25,929	268,100	240,000	(28,100)	112%
1-5-5200-502	Bereavement/Seminar/Jury Duty	0	1,927	1,000	(927)	193%
1-5-5200-503	Sick Leave	709	19,218	24,000	4,782	80%
1-5-5200-504	Vacation	777	5,060	12,750	7,690	40%
1-5-5200-505	Holidays	1,655	8,578	8,500	(78)	101%
1-5-5200-507	Life Insurance	123	1,554	1,600	46	97%
1-5-5200-508	Uniforms, Employee Benefits	0	852	1,270	418	67%
1-5-5200-511	Treatment & Chemicals	0	93,803	135,000	41,197	69%
1-5-5200-512	Lab Testing	10,525	43,185	95,000	51,815	45%
1-5-5200-513	Maintenance Equipment (pumping)	8,896	157,048	125,000	(32,048)	126%
1-5-5200-514	Utilities - Gas	10	109	50	(59)	217%
1-5-5200-515	Utilities - Electric	130,904	1,400,697	1,530,000	129,303	92%
1-5-5200-517	Telemetry Maintenance	943	5,317	6,000	683	89%
1-5-5200-518	Seminar & Travel Expenses	0	120	500	380	24%
1-5-5200-519	Education Expenses	0	915	1,000	85	92%
1-5-5200-520	Worker's Comp Insurance	1,761	10,911	22,000	11,089	50%
1-5-5200-620	State Project Water Purchased	81,152	738,156	480,000	(258,156)	154%
1-5-5200-621	Groundwater Purchase (SMWC)	0	492,000	550,000	58,000	89%
	<b>Total SOURCE OF SUPPLY &amp; WATE</b>	<b>272,613</b>	<b>3,359,047</b>	<b>3,353,670</b>	<b>(5,377)</b>	<b>100%</b>
<b>TRANSMISSION &amp; DISTRIBUTION</b>						
1-5-5300-237	Health Insurance	9,460	108,819	130,000	21,181	84%
1-5-5300-243	Retirement/CalPERS	9,685	112,175	140,000	27,825	80%
1-5-5300-501	Labor	31,919	347,722	435,000	87,278	80%
1-5-5300-502	Bereavement/Seminar/Jury Duty	351	1,205	6,500	5,295	19%
1-5-5300-503	Sick Leave	2,261	22,139	18,000	(4,139)	123%
1-5-5300-504	Vacation	515	16,834	24,000	7,166	70%
1-5-5300-505	Holidays	3,911	19,858	20,000	142	99%
1-5-5300-507	Life Insurance	252	2,914	3,400	486	86%
1-5-5300-508	Uniforms, Employee Benefits	0	2,937	4,430	1,493	66%
1-5-5300-518	Seminar & Travel Expenses	0	10	1,000	990	1%

**BEAUMONT CHERRY VALLEY WATER DISTRICT  
MONTH END FINANCIAL REPORT**



**GL5410  
Date: Jan 04, 2010**

**For Period Ending 31-Dec-2009**

<b>General Funds</b>	<b>Current Month</b>	<b>Year to Date</b>	<b>Adopted Budget</b>	<b>Budget Remaining</b>	<b>Percent to Budget</b>
1-5-5300-519 Education Expenses	0	383	2,000	1,618	19%
1-5-5300-520 Worker's Comp Insurance	3,060	17,550	38,000	20,450	46%
1-5-5300-530 Maint Pipeline/Fire Hydrant	15,135	68,949	82,500	13,551	84%
1-5-5300-531 Line Locates	125	2,879	2,000	(879)	144%
1-5-5300-534 Maint Meters & Services	216	36,837	95,000	58,163	39%
1-5-5300-535 Backflow Devices	0	278	750	472	37%
1-5-5300-536 Maintenance Reservoirs/Tanks	0	1,240	10,000	8,760	12%
1-5-5300-537 Maintenance Pressure Regulators	0	10,794	18,000	7,206	60%
1-5-5300-538 Inspections	2,112	35,452	40,000	4,548	89%
<b>Total TRANSMISSION &amp; DISTRIBUTION</b>	<b>79,001</b>	<b>808,975</b>	<b>1,070,580</b>	<b>261,605</b>	<b>76%</b>

**CUSTOMER SERVICE & METER READING**

1-5-5400-237 Health Insurance	2,734	31,737	42,000	10,263	76%
1-5-5400-243 Retirement/CalPERS	2,467	29,342	40,000	10,658	73%
1-5-5400-501 Labor	8,470	95,744	95,000	(744)	101%
1-5-5400-502 Bereavement/Seminar/Jury Duty	0	1,026	500	(526)	205%
1-5-5400-503 Sick Leave	408	4,041	2,000	(2,041)	202%
1-5-5400-504 Vacation	377	4,634	5,850	1,216	79%
1-5-5400-505 Holidays	1,064	5,844	5,500	(344)	106%
1-5-5400-507 Life Insurance	63	753	900	147	84%
1-5-5400-508 Uniforms, Employee Benefits	0	668	890	222	75%
1-5-5400-519 Education Expenses	55	340	1,000	660	34%
1-5-5400-520 Worker's Comp Insurance	763	3,783	8,000	4,217	47%
<b>Total CUSTOMER SERVICE &amp; METER READING</b>	<b>16,399</b>	<b>177,912</b>	<b>201,640</b>	<b>23,728</b>	<b>88%</b>

**ADMINISTRATION**

1-5-5500-237 Health Insurance	11,260	147,455	148,500	1,045	99%
1-5-5500-243 Retirement/CalPERS	15,732	232,069	275,000	42,931	84%
1-5-5500-501 Labor	68,973	799,441	830,000	30,559	96%
1-5-5500-502 Bereavement/Seminar/Jury Duty	0	0	2,500	2,500	0%
1-5-5500-503 Sick Leave	2,536	104,078	100,000	(4,078)	104%
1-5-5500-504 Vacation	537	43,382	38,000	(5,382)	114%
1-5-5500-505 Holidays	5,865	35,553	40,000	4,447	89%
1-5-5500-507 Life Insurance	391	5,438	4,800	(638)	113%
1-5-5500-518 Seminar & Travel Expenses	199	822	6,000	5,178	14%

**BEAUMONT CHERRY VALLEY WATER DISTRICT  
MONTH END FINANCIAL REPORT**



**GL5410  
Date: Jan 04, 2010**

**For Period Ending 31-Dec-2009**

<b>General Funds</b>	<b>Current Month</b>	<b>Year to Date</b>	<b>Adopted Budget</b>	<b>Budget Remaining</b>	<b>Percent to Budget</b>
1-5-5500-519 Education Expenses	90	90	1,000	910	9%
1-5-5500-520 Worker's Comp Insurance	1,751	10,463	25,000	14,537	42%
1-5-5500-522 Unemployment Insurance	0	5,196	0	(5,196)	
1-5-5500-547 Employer Share for Retired (CalPERS)	521	4,313	0	(4,313)	
1-5-5500-548 Administrative Costs (CalPERS)	141	1,668	0	(1,668)	
1-5-5500-549 Bank Charges/Transaction Fees	0	27,652	14,600	(13,052)	189%
1-5-5500-553 Temporary Labor	0	3,638	17,500	13,862	21%
1-5-5500-555 Office Supplies	2,592	46,418	55,000	8,582	84%
1-5-5500-556 Office Equipment/Service Agreement	26,680	83,693	60,000	(23,693)	139%
1-5-5500-557 Office Maintenance	1,077	13,921	20,000	6,079	70%
1-5-5500-558 Membership Dues	106	20,645	15,000	(5,645)	138%
1-5-5500-559 Armored Car	0	3,148	5,000	1,852	63%
1-5-5500-560 Office Equip Maint & Repairs	0	1,799	3,200	1,401	56%
1-5-5500-561 Postage	2,138	33,990	40,000	6,010	85%
1-5-5500-562 Subscriptions	714	1,280	2,850	1,570	45%
1-5-5500-563 Miscellaneous Operating Supplies	2,199	14,880	15,000	120	99%
1-5-5500-564 Miscellaneous Tools/Equipment	388	7,809	15,000	7,191	52%
1-5-5500-567 Employee Medical/First Aid	0	289	600	311	48%
1-5-5500-568 Random Drug Testing	0	25	500	475	5%
1-5-5500-570 Property/Auto/Liability Insurance	0	55,235	80,090	24,855	69%
1-5-5500-572 State Mandates & Tarriffs	2,256	25,632	30,000	4,368	85%
1-5-5500-573 Miscellaneous Expenses	80	2,568	1,000	(1,568)	257%
1-5-5500-574 Public Education	0	8,265	10,000	1,735	83%
1-5-5500-577 Property Taxes (out of district parcels)	0	12,596	6,410	(6,186)	197%
1-5-5500-578 IT Support/Software Support	6,796	57,642	65,000	7,358	89%
1-5-5500-630 Accounts Receivable	269	2,071	1,000	(1,071)	207%
<b>Total ADMINISTRATION</b>	<b>153,290</b>	<b>1,813,165</b>	<b>1,928,550</b>	<b>115,385</b>	<b>94%</b>
<b>BOARD OF DIRECTORS</b>					
1-5-5510-550 Board of Director Fees	4,400	37,800	60,000	22,200	63%
1-5-5510-551 Seminar & Travel Expenses	0	1,331	3,500	2,169	38%
1-5-5510-552 Election Expenses	0	202	22,575	22,373	1%
<b>Total BOARD OF DIRECTORS</b>	<b>4,400</b>	<b>39,333</b>	<b>86,075</b>	<b>46,742</b>	<b>46%</b>
<b>MAINTENANCE &amp; GENERAL PLANT</b>					



**BEAUMONT CHERRY VALLEY WATER DISTRICT  
MONTH END FINANCIAL REPORT**



**GL5410  
Date: Jan 04, 2010**

**For Period Ending 31-Dec-2009**

<b>General Funds</b>		<b>Current Month</b>	<b>Year to Date</b>	<b>Adopted Budget</b>	<b>Budget Remaining</b>	<b>Percent to Budget</b>
1-5-5610-514	560 Magnolia Ave - Gas	0	0	150	150	0%
1-5-5610-515	560 Magnolia Ave - Electric	1,207	19,958	22,000	2,042	91%
1-5-5610-580	560 Magnolia Ave - Telephone	2,529	36,892	55,000	18,108	67%
1-5-5610-581	560 Magnolia Ave - Sanitation	(665)	1,460	2,400	940	61%
1-5-5610-582	560 Magnolia Ave - Maintenance	107	2,595	3,500	905	74%
1-5-5615-501	12303 Oak Glen Rd - Labor	0	342	1,000	658	34%
1-5-5615-515	12303 Oak Glen Rd - Electric	460	2,527	1,500	(1,027)	168%
1-5-5615-582	12303 Oak Glen Rd - Maintenance	0	1,087	3,000	1,913	36%
1-5-5615-583	12303 Oak Glen Rd - Propane	0	123	1,500	1,377	8%
1-5-5620-501	13695 Oak Glen Rd - Labor	0	0	1,000	1,000	0%
1-5-5620-515	13695 Oak Glen Rd - Electric	248	652	1,000	348	65%
1-5-5620-582	13695 Oak Glen Rd - Maintenance	94	2,998	3,000	2	100%
1-5-5620-583	13695 Oak Glen Rd - Propane	226	252	1,500	1,248	17%
1-5-5625-501	13697 Oak Glen Rd - Labor	0	0	1,000	1,000	0%
1-5-5625-515	13697 Oak Glen Rd - Electric	266	1,779	1,500	(279)	119%
1-5-5625-582	13697 Oak Glen Rd - Maintenance	90	3,432	3,000	(432)	114%
1-5-5625-583	13697 Oak Glen Rd - Propane	247	1,509	1,500	(9)	101%
1-5-5630-501	9781 Avenida Miravilla - Labor	0	0	1,000	1,000	0%
1-5-5630-515	9781 Avenida Miravilla - Electric	91	922	300	(622)	307%
1-5-5630-582	9781 Avenida Miravilla - Maintenance	0	5,568	8,000	2,432	70%
1-5-5630-583	9781 Avenida Miravilla - Propane	185	847	0	(847)	
1-5-5635-515	815 E. 12th Street - Electric	571	6,066	9,000	2,934	67%
1-5-5635-580	815 E. 12th Street - Telephone	65	574	480	(94)	120%
1-5-5635-581	815 E. 12th Street - Sanitation	237	2,646	3,000	354	88%
1-5-5635-582	815 E. 12th Street - Maintenance	381	3,895	4,000	105	97%
1-5-5640-581	11083 Cherry Ave - Sanitation	225	2,700	3,000	300	90%
1-5-5700-589	Auto/Fuel	8,800	68,235	120,000	51,765	57%
1-5-5700-590	Safety Equipment	0	22	3,000	2,978	1%
1-5-5700-591	Communication Maintenance	0	0	1,000	1,000	0%
1-5-5700-592	Repair/Maint of General Equip	214	1,116	3,000	1,884	37%
1-5-5700-593	Repair Vehicles and Tools	1,225	27,058	30,000	2,942	90%
1-5-5700-594	Large Equip Maintenance	23	28,609	35,000	6,391	82%
1-5-5700-595	Equip Preventative Maintenance	0	0	1,000	1,000	0%
1-5-5700-596	Auto/Equipment Operation	2,816	40,732	20,000	(20,732)	204%
1-5-5700-597	Maint General Plant (Buildings)	526	5,110	10,000	4,890	51%
1-5-5700-598	Landscape Maintenance	3,991	44,859	72,000	27,141	62%

**BEAUMONT CHERRY VALLEY WATER DISTRICT  
MONTH END FINANCIAL REPORT**



**GL5410  
Date: Jan 04, 2010**

**For Period Ending 31-Dec-2009**

<b>General Funds</b>	<b>Current Month</b>	<b>Year to Date</b>	<b>Adopted Budget</b>	<b>Budget Remaining</b>	<b>Percent to Budget</b>
1-5-5700-601 Recharge Fac, Canyon & Pond Maint	1,902	26,195	18,000	(8,195)	146%
<b>Total MAINTENANCE &amp; GENERAL PL</b>	<b>26,061</b>	<b>340,760</b>	<b>445,330</b>	<b>104,570</b>	<b>77%</b>
<b>ENGINEERING (IN-HOUSE)</b>					
1-5-5800-237 Health Insurance	315	3,777	5,200	1,423	73%
1-5-5800-243 Retirement/CalPERS	906	10,290	17,000	6,710	61%
1-5-5800-501 Labor	10,317	75,093	120,000	44,907	63%
1-5-5800-502 Bereavement/Seminar/Jury Duty	0	0	500	500	0%
1-5-5800-503 Sick Leave	0	0	2,000	2,000	0%
1-5-5800-504 Vacation	0	0	3,200	3,200	0%
1-5-5800-505 Holidays	498	2,570	2,600	30	99%
1-5-5800-507 Life Insurance	25	289	312	23	93%
1-5-5800-518 Seminar & Travel Expenses	0	0	500	500	0%
1-5-5800-519 Education Expenses	0	421	5,000	4,579	8%
1-5-5800-520 Worker's Comp Insurance	362	1,894	4,000	2,106	47%
<b>Total ENGINEERING (IN-HOUSE)</b>	<b>12,423</b>	<b>94,335</b>	<b>160,312</b>	<b>65,977</b>	<b>59%</b>
<b>PROFESSIONAL SERVICES</b>					
1-5-5810-611 General - Legal	9,095	184,011	125,000	(59,011)	147%
1-5-5810-612 Dev Reimb - Legal	0	0	1,000	1,000	0%
1-5-5810-614 Audit	0	18,819	19,000	181	99%
1-5-5810-616 Accounting (non audit)	0	10,756	1,000	(9,756)	1076%
1-5-5820-611 General - Engineering	4,093	115,348	120,000	4,652	96%
1-5-5820-612 Dev Reimb - Engineering	0	4,352	40,000	35,648	11%
1-5-5820-614 STWMA Project Committee #1	(4,220)	181,044	0	(181,044)	
1-5-5820-615 Engineering - Permitting (Rec Water)	0	855	50,000	49,145	2%
<b>Total PROFESSIONAL SERVICES</b>	<b>8,968</b>	<b>515,185</b>	<b>356,000</b>	<b>(159,185)</b>	<b>145%</b>
<b>Total Revenue</b>	<b>663,642</b>	<b>9,225,137</b>	<b>8,997,686</b>		
<b>Total Expenses</b>	<b>573,156</b>	<b>7,148,711</b>	<b>7,602,157</b>		
<b>SURPLUS/(DEFICIT)</b>	<b>90,485</b>	<b>2,076,427</b>	<b>1,395,529</b>		

**BEAUMONT CHERRY VALLEY WATER DISTRICT  
MONTH END FINANCIAL REPORT**



**GL5410  
Date: Jan 04, 2010**

**For Period Ending 31-Dec-2009**

<b>Restricted Funds</b>	<b>Current Month</b>	<b>Year to Date</b>	<b>Adopted Budget</b>	<b>Budget Remaining</b>	<b>Percent to Budget</b>
<b>Revenue</b>					
<b>NON-OPERATING REVENUE</b>					
1-4-4020-421	Front Footage Fees	-	31,640		
1-4-4020-422	FF- Wells	-	33,373		
1-4-4020-423	FF- Water Rights	-	213,212		
1-4-4020-424	FF- Water Treatment Plant	-	15,905		
1-4-4020-425	FF- Local Water Resources	-	88,806		
1-4-4020-426	FF- Recycled Water Facilities	-	24,069		
1-4-4020-427	FF- Transmission	-	27,041		
1-4-4020-428	FF- Storage	-	34,606		
1-4-4020-429	FF- Booster	-	2,402		
1-4-4020-430	FF- Pressure Reducing Station	-	1,227		
1-4-4020-431	FF- Miscallenous Projects	-	1,071		
1-4-4020-432	FF- Financing Costs	-	5,261		
1-4-4020-435	Interest Income	513	28,074		
	<b>Total NON-OPERATING REVENUE</b>	<b>513</b>	<b>506,689</b>		
<b>Expense</b>					
<b>CONSTRUCTION IN PROGRESS</b>					
2-1-0001	New Service Installation	390	64,445	-	(64,445)
2-1-0006	Water Master Plan Update	-	7,249	35,000	27,751
2-1-0304	Recycled Water System	1,556	7,689	-	(7,689)
2-1-0605	Sunny Cal Egg Ranch Well Rehab	-	10,032	-	(10,032)
2-1-0700	SRF Loan - Recycled Water System	-	3,594	-	(3,594)
2-1-0710	CV Pollution Control Project	-	-	100,000	100,000
2-1-0809	2800 Zone Recycled Water Tank (PH 1)	19,243	67,307	2,200,000	2,132,693
2-1-0810	24" Recycled Main - Brookside (PH 2)	20,698	64,986	750,000	685,014
2-1-0811	1MG Reservoir/Booster Station (PH 3)	15,938	62,983	1,300,000	1,237,017
2-1-0812	24" Recycled Main - Westerly Loop (PH 4B)	9,254	94,265	5,000,000	4,905,735
2-1-0813	Rec Main Ring Ranch/OVP (PH 5)	14,418	111,923	1,700,000	1,588,077
2-1-0815	Edgar 8" Replacement Pipeline	-	135,251	150,000	14,749
2-1-0816	SWP - Permanent Connection	-	387,545	400,000	12,455
2-1-0818	24" Recycled Main - Westerly Loop (PH 4A)	24,188	44,471		
2-1-0901	2007 John Deere Backhoe 310SG	-	46,763	50,000	3,238
2-1-0902	1 Ton Truck w/ 3/4 Ton Dump Bed	-	35,154	50,000	14,846
2-1-0904	Loan Amortization Software	-	-	3,500	3,500
2-1-0905	UWMP Update (2010)	-	-	30,000	30,000
2-1-0906	GIS/GPS Software Purchase	4,500	46,442	65,000	18,558
2-1-0907	OVP 24" & 10" Main Relocation	98	7,176	-	(7,176)
2-1-0909	New SQL Server 2009	-	1,044	-	(1,044)
	<b>Total CONSTRUCTION IN PROGRESS</b>	<b>110,282</b>	<b>1,198,319</b>	<b>11,833,500</b>	<b>10,635,181</b>

BEAUMONT CHERRY VALLEY WATER DISTRICT  
DEC 2009 - FUND BALANCE\*



	Beginning Balance Nov-09	Additions	Expenses	Transfers	Ending Balance Dec-09
<b>GENERAL</b>	5,475,381.53	663,641.63	578,046.87	(88,407.45)	5,472,568.84
DEPRECIATION	(2,761,765.23)		98.08	50,000.00	(2,711,863.31)
OPERATING RESERVE	1,929,881.22			25,604.97	1,955,486.19
EMERGENCY RESERVE	745,667.72			12,802.48	758,470.20
FRONT FOOTAGE	1,569,017.52				1,569,017.52
<b>FACILITIES FEES POTABLE</b>					
WELLS & WELL UPGRD	6,286,758.01				6,286,758.01
TRANSMISSIONS MAINS	(2,999,577.44)				(2,999,577.44)
STORAGE	(4,396,274.76)				(4,396,274.76)
BOOSTER STATIONS	1,408,643.28				1,408,643.28
TREATMENT PLANTS	9,911,921.93				9,911,921.93
MISC. ENGIN	525,505.99				525,505.99
PRESSURE REDUCING STA.	(267,199.26)				(267,199.26)
MISC. PROJECTS	(1,327,767.14)				(1,327,767.14)
FINANCING COSTS	1,421,308.96				1,421,308.96
FACILITY FEES RECYCLED	(4,371,771.80)		70,112.57		(4,441,884.37)
REC STORAGE	(105,427.77)		35,180.74		(140,608.51)
WATER RIGHTS (SWP)	6,391,787.00				6,391,787.00
LOCAL WATER RESOURCE	(8,301,990.41)				(8,301,990.41)
DEVELOPER REIMBURSEMENT	(243,304.54)				(243,304.54)
City of Banning -	9,290.22				9,290.22
<b>*Total</b>	<b>10,900,085.04</b>	<b>663,641.63</b>	<b>683,438.26</b>	<b>-</b>	<b>10,880,288.41</b>

***\*Completion of Construction in Progress including carry over from prior year***

***\*Actual Cash Balance does not reflect inventory purchased for capital improvement jobs in progress.***

***\*\*\*The difference in the deposit balance and the facility balance represents construction in progress\*\*\****

***Bank Balances (in memo only)***

Wells Fargo - Commercial	12,998.93
Bank of Hemet - General Fund	299,396.00
Bank of Hemet - AP	170,466.90
Bank of Hemet - Payroll	31,898.50
Bank of Hemet - LAMMA	3,585,873.15
LAIF	-
	<hr/>
	<b>4,100,633.48</b>

**RECORD OF THE MINUTES OF THE  
REGULAR MEETING OF THE  
BOARD OF DIRECTORS OF THE  
BEAUMONT CHERRY VALLEY WATER DISTRICT  
December 16, 2009**

**CALL TO ORDER, PRESIDENT BALL**

President Ball called the meeting to order at 7:03 p.m., 560 Magnolia Avenue, Beaumont, California.

**PLEDGE OF ALLEGIANCE, DIRECTOR ROSS**

Director Ross led the pledge.

**INVOCATION, VICE PRESIDENT PARKS**

Vice President Parks recited the invocation.

**ROLL CALL, BLANCA MARIN**

Those responding to roll call were President Ball, Vice President Parks and Directors Magee, Ross and Woll. Also present at this meeting were General Counsel Gil Granito, Interim General Manager Anthony Lara and Executive Assistant Blanca Marin.

**PUBLIC INPUT**

President Ball invited Judy Bingham to address the Board on an item not on the agenda. Ms. Bingham questioned the Board as to why there was everybody at the City Council Meeting last night if there was no agreement. She also questioned the Board as to whether or not the City of Beaumont will give us the recycled water. She also requested to be informed as to what the plans were, because the City and the District have been taking funds from developers and now the rate payers will be asked to give more funds.

President Ball invited Patsy Reeley to address the Board on an item not on the agenda. Ms. Reeley expressed her disappointment regarding the District Staff's behavior at the City Council meeting. She indicated that members of the District met with the City of Beaumont's Attorney, Mr. Aklufi a few minutes before the meeting started and reached some kind of agreement. She indicated her disapproval of this kind of behavior. She indicated that she emailed other people inviting them to attend this meeting in support of the District. She expressed her disapproval indicating that after waiting almost two hours for the item to come up, the item was tabled. She requested that District Staff not collect any kind of payment for attendance to this meeting.

**ACTION ITEMS**

**1. ANNUAL ORGANIZATION MEETING OF THE BOARD OF DIRECTORS  
PURSUANT TO PART II, SECTION FIVE OF THE POLICIES AND  
PROCEDURES MANUAL**

**A. Nomination and Election of the President**

Director Ross moved to nominate Director Ball for President, Director Ball accepted. The motion passed unanimously.

**B. Nomination and Election of the Vice President**

Director Ross moved to nominate Director Parks for the Vice President Seat, Director Pars accepted. The motion passed unanimously.

C. Appointment of the Secretary

Director Ross moved to nominate Director Woll for the Secretary Seat, Director Woll accepted. The motion passed unanimously.

D. Appointment of the Treasurer

Director Woll moved to nominate Director Ross for the Treasurer Seat, Director Ross accepted. The motion passed unanimously.

E. Appointment of the Executive Assistant as the Recording Secretary

President Ball moved to appoint Executive Assistant Blanca Marin as the Recording Secretary, Ms. Marin accepted. The motion passed unanimously.

**2. ADOPTION OF THE AGENDA**

Vice President Parks moved to adopt the agenda as presented. Director Woll seconded. The motion passed unanimously.

**3. RESOLUTION 2009-10, A RESOLUTION OF THE BOARD OF DIRECTORS OF THE BEAUMONT CHERRY VALLEY WATER DISTRICT CHANGING (OR RATIFYING) THE DAY OF THE MONTH FOR REGULAR MONTHLY MEETINGS\*\***

Interim General Manager Anthony Lara explained to the Board that the attached resolution was to be changed only if the Board would want to change the Board meeting time and or day.

President Ball moved to leave the meeting time as is. Vice President Parks seconded. The motion passed unanimously.

**4. FINANCIAL REPORTS**

a. Bills for Consideration\*\*

Board Action

November 2009

The Board will take action on the Bills for Consideration taking into account the recommendations of the Finance and Audit Committee.

Director Ross moved to approve the November 2009 Invoices. Vice President Parks seconded. The motion passed unanimously.

b. Invoices for Payment Approval\*\*

Board Action

The Board will take action on the Bills for Consideration taking into account the recommendations of the Finance and Audit Committee.

Director Ross moved to approve the invoices pending payment. Vice President Parks seconded. The motion passed unanimously.

c. Month End Financial Statements  
November 2009\*\*

Board Action

The Board will take action to "accept and file" the Month End Financial Statements presented by staff.

Director Ross moved to accept the November 2009 Financial Statement. Vice President Parks seconded. The motion passed unanimously.

**5. APPROVAL OF THE MINUTES**

- a. Minutes of the Regular Meeting of November 18, 2009\*\*

Vice President Parks moved to approve the Minutes of November 18, 2009 as presented. Director Woll seconded. The motion passed unanimously.

- b. Minutes of the Special Meeting of December 3, 2009\*\*

Vice President Parks moved to approve the Special Minutes of December 3, 2009. Directors Ross seconded. The motion passed unanimously.

**6. APPROVAL OF RESOLUTION 2009-11, A RESOLUTION OF THE BEAUMONT CHERRY VALLEY WATER DISTRICT APPROVING AND ADOPTING THE ESTABLISHMENT OF A CHARTER MEMBERSHIP OF THE COLLABORATIVE AGENCY COMMITTEE\*\***

Vice President Parks moved to approve Resolution Approving and Adopting the Establishment of a Charter Membership of the Collaborative Agency Committee and to appoint two members of the Board. Director Ross seconded. The motion failed by the following roll call.

Nays: Ball, Magee, Ross and Woll  
Ayes: Parks  
Absent: None  
Abstain: None

After discussion, President Ball moved to amend the Resolution to appoint only one Board member for this Committee. Director Woll seconded. The motion passed unanimously.

Director Magee was appointed to continue as a member of this Committee.

**7. REQUEST FROM CHERRY VALLEY WATER COMPANY REGARDING FACILITY FEES VARIANCE\*\***

Interim General Manager, Anthony Lara provided a brief report on this item. Mr. Lara indicated that the portion of the facility fees is directly related to the cost to deliver the water to the Company. He further recommended that the portion of the facility fees not be waived. He also recommended that the Company bring back to the Board any information as to what the value of their assets would be.

President Ball invited Luwana Ryan to address the Board on this item. Ms. Ryan referred to the letter from Cherry Valley Water Company. Ms. Ryan indicated that the opportunity given to Bonita Vista in 2002 was also offered to Cherry Valley Water Company. She further indicated that the CVWC has no water rights. She indicated that the CVWC's two wells are more of a liability rather than assets to the District as these wells, according to the Wildermuth Report are contaminated.

President Ball invited Patsy Reeley to address the Board on this item. She indicated that this issue has been on the agenda several times and it is time now that a decision is taken. She opposed the request to waive the facility fees.

President Ball invited Samuel Trussell to address the Board on this item. Mr. Trussell provided a brief background on the wells owned by the Cherry Valley Water Company. He agreed on the statement made by Mr. Lara that the value of the wells

needed to be determined. Mr. Trussell answered questions from the Board related to the maintenance of the wells. He indicated that the CVWC found minutes of their Board meetings indicating that the fees would be waived. He also indicated that in conversations with former general manager it was agreed that the roads needed to be dedicated and that has been done. He expressed his understanding that the second step is to value the assets and to determine the credit that the CVWC would get in exchange.

After a lengthy discussion between the public and the Board, Director Woll moved to deny the variance request. Vice President Parks seconded. The motion passed by the following roll call:

Ayes: Ball, Parks, Magee, Ross and Woll  
Nays: None  
Absent: None  
Abstain: None

**8. APPROVAL OF EXTENSION OF CURRENT MEMORANDUM OF UNDERSTANDING BETWEEN THE BEAUMONT CHERRY VALLEY WATER DISTRICT AND THE EMPLOYEE ASSOCIATION\*\***

General Counsel Gil Granito indicated that the purpose of the agreement is to memorialize the previously agreed to extension of the current Memorandum of Understanding to December 31, 2009 and to further extend the current Memorandum of Understanding to June 30<sup>th</sup> of 2010 with the condition that the Employee Association would forgo the Cost Of Living Adjustments for the period of the additional six months extension; all of which was recommended by the Personnel Committee.

President Ball invited Patsy Reeley to address the Board on this item. Ms. Reeley indicated it bothers her that the current MOU is dated 2008 and she did not understand how the District let this issue go for so long. She also disagreed with the number of vacation days that the District grants the employees. She indicated that employees should be grateful of working 8 hours a day as other people are not as lucky.

After discussion regarding the Cost of Living Adjustment (COLA), Director Ross moved to approve the extension of the current MOU. Vice President Parks seconded. The motion passed unanimously.

**9. ACCEPTANCE OF RESIGNATION OF ANDREW SCHLANGE FROM THE SAN TIMOTEO WATERSHED MANAGEMENT AUTHORITY AND THE BEAUMONT BASIN WATERMASTER COMMITTEES\*\***

Interim General Manager Anthony Lara indicated that the attached letter was for information purposes and to request direction from the Board as to how the Board wants to proceed with the functions of the Watermaster and STWMA.

Vice President Parks moved to accept the resignation. Director Ross seconded. The motion passed unanimously.

Interim General Manager Anthony Lara was directed to draft a letter to the Watermaster and STWMA Chairperson suggesting to schedule a meeting for January of 2010.

**10. REPORTS FOR DISCUSSION AND POSSIBLE ACTION**

**(a) Ad hoc Committees** – President Ball described the events and meetings that took place in order to create the recycled water agreement between the city and the district. Included was a timeline of dates and additional meetings held both before and after the agreement was passed by the district including events at the city council meetings and the reasons for not speaking at the second city



council meeting attended. While this is frustrating to many, including the ad hoc committee and staff, it was determined that the best course of action for the District ratepayers was not to speak at that particular council meeting comments.

Patsy Reeley expressed her understanding on the District actions at the City's meeting, but she indicated that the District needs to understand that the District is dealing with "a bunch of crooks".

President Ball indicated that the agreement was "no talk and we will table it".

Patsy Reeley expressed her frustration as indicated that she invited several people to attend this meeting as a support to this District. She indicated that those people present in support of the District were disappointed of the "back door deal". She indicated that she assured these people that the District did not make those kinds of deals.

Vice President Parks expressed her frustration indicating that the City is not willing to work with the District.

#### **(b) General Manager**

- Recycled Water Project- He indicated that the underground piping for the reservoir has been installed and they will be pouring the foundation shortly. He indicated that the Brookside pipeline is about 85 percent complete. He also reported that Desert Lawn Project will be started shortly. Lastly he indicated that the notice of selection has been given for the Ring Ranch Road but not a notice to proceed.
- 2010 Fishing Derby- He indicated that he met with the Parks and Recreation District. He indicated that another Fishing Derby has been scheduled for March 27, 2010. He indicated that he will contact the Pass Agency to coordinate the delivery of water.
- SGPWA Capacity Fee\*\*- He indicated that the report included in the agenda packet for Directors to become familiar. He indicated that General Manager of San Gorgonio Pass Agency will provide a presentation at the next District meeting.
- District Closure on December 24, 2009 – He indicated that all the employees at the District had agreed on taking this extra day off without pay. He further requested the Board to consider this item. The Board unanimously approved the extra day off.
- Interim General Manager Anthony Lara reported that he met with LAFCO. He indicated that LAFCO is trying to "clean-up" the properties that are outside the District service area as the District is still paying taxes on the properties that are outside the District's service area.

#### **(c) Directors**

- Dr. Blair Ball
- Stella Parks- She reported that SGPWA has not rescheduled the meeting regarding the Capacity Fee. She briefly spoke in regarding the annexation that is going on right now.
  - Ken Ross-None
  - Ryan Woll-None
  - Niki Magee- Ms. Magee complaint to the Board and Staff by stating the following: "I was appointed to the Board in June, and it is a different story seeing things from behind the curtain, and how things are working and other things. I am actually very disappointed in this Board. A lot of things have been before it, the rate payers have expressed a lot of concerns, and things are not happening. There is a lot of talk, very little action. I was at the City Council meeting last night. I was not informed of it. It was a fluke of accident that someone told me just before it. I was down there to present as a property owner on another matter, decided I should back off that there might be a conflict because our people were there. I was rather

embarrassed by the conduct of our people. Now, I would hope that possibly for the first of the year, maybe like a new year's resolution that, we can start planning what we are going to do. What has to be done; an organizational plan; put some dates for completion on it so that it actually happens. The other thing is that I am having great trouble getting materials from Staff, where I ask for things several times and I actually have to do battle to get it. I really do not know, on two occasions I have attempted to put something on the agenda and I was unable to get it on the agenda and we have policies and procedures, there is State Codes and other things, apparently, that are somewhat ignored. So, that is the picture from behind the curtain and probably the reason a number of rate payers got irate at times. Why are things happening, what is going on, guess what, I don't know either. Thanks!"

#### **(d) Legal Counsel**

##### **11. ANNOUNCEMENTS**

- **The District will be closed on December 24 and 25, 2009 for Christmas Holidays**
- **The District will be closed on January 1, 2010 for New Year's Holiday**
- **Regular Board Meeting will be held on January 13, 2010**

##### **ACTION LIST**

-Draft a letter to Mr. Jorritsma

---

##### **12. CLOSED SESSION CONFERENCE WITH LEGAL COUNSEL-**

President Ball adjourned the meeting to Closed Session at 8:58 p.m.

**Closed Session will be held to confer with legal counsel on TWO matters of potential litigation pursuant to subdivision (c) of Government Code section 54956.9-TWO MATTERS-Potential Litigation**

##### **13. OPEN SESSION- REPORT ON CLOSED SESSION**

President Ball reconvened to Open Session at approximately 11:07 PM.

General Counsel Gil Granito reported that at approximately 8:58 PM, the Board went into Closed Session to discuss the following items as reflected on tonight's agenda:

The first matter discussed in Closed Session concerned one of the matters reflected on Item 12 of tonight's agenda. During this phase of the Closed Session, Special Counsel, Neal Myers led a discussion on one matter of potential litigation pursuant to subdivision (c) of Government Code Section 54956.9. No further reportable action was taken and Mr. Myers left the Closed Session at the end of this discussion.

During the second phase of the Closed Session, General Counsel Gil Granito led a discussion on one matter of potential litigation pursuant to subdivision (c) of Government Code Section 54956.9 and no further reportable action was taken.

##### **14. ADJOURNMENT**

President Ball adjourned the meeting at approximately 11:10PM.

---

Dr. Blair Ball, President of the  
Board of Directors of the  
Beaumont Cherry Valley Water District

Attest:

---

Ryan Woll, Secretary to the  
Board of Directors of the  
Beaumont Cherry Valley Water District

Niki Magee  
38455 Vineland Street  
Cherry Valley, CA 92223

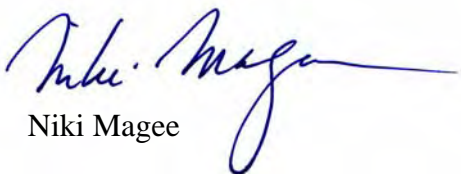
January 7, 2010

Anthony Lara  
Interim General Manager  
Beaumont-Cherry Valley Water District  
560 Magnolia Avenue  
Beaumont, CA 92223

Dear Mr. Lara:

With this letter, I hereby submit my resignation from Director at the Beaumont-Cherry Valley Water District, effective January 6, 2010, due to potential professional damages to my credibility for expert testimony and a serious conflict of interest with a long term consulting client, which I just became aware of.

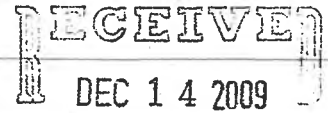
Sincerely,



Niki Magee

To Board of Trustees BCVWD

12-06-09



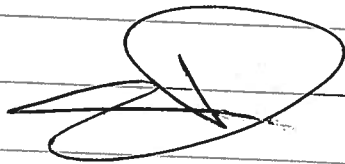
BY: \_\_\_\_\_  
This letter is written in correspondance  
to a disputed billing. It is to review a  
prior billing in the October of 2004. A  
very unusual spike in water usage,  
consumption, or what have you. It was  
within a cycle of billing with there  
were a couple of incidents I believe  
that may have contributed to the \$300<sup>00</sup>  
+ (one cycle) bill. Before the bill  
was even mailed there were no other  
bills @ This address 1026 Wellwood Ave  
that we've come close to a third ( $\frac{1}{3}$ )  
of it in fact in research the previous  
10 years 2 of which I was the resident  
& now 6 years after the said bill the  
average total of one cycle billing was  
about \$63<sup>00</sup> (on average) The meter reader  
had trained a person just prior<sup>2</sup> The meters  
were apparently updated for future plans  
by BCVWD & the month was October a rather  
low water consumption month.

This bill has caused penalties + late fees to accrue over the last 5 years + there has been no interruption in service on my account nor has there been any repairs needed to rectify the situation. There in fact has been only one call to BCWD to come out to my residence + that was to see what water was seeping from the cracks of my neighbors driveway + the easement between the two properties. It was determined by BCWD that it was not on their (BCWD) side of the "fence" + what was (which disappeared later that day) was our (myself + neighbor) problem. Although service has never been turned off I have received over 20 \$40<sup>00</sup> turn off turn on charges over 100 \$15<sup>00</sup> fees + I cant count how many \$5<sup>00</sup> fees. That occur whether I pay on time or not. Leaving the bill to only get higher in close, please remove this billing as I did

in my fairness pay for it time  
& time again being no fault of  
my own. I will continue to pay  
my monthly or on cycled payments  
but I will no longer pay on this  
astroticity of a one cycle / 6 year old.  
absurd bill nor the penalties that  
it will accrue

Thank you Board for  
your time & I guess I will  
see you on Dec 16<sup>th</sup>

David Thomas caretaker  
for + France for Mrs. DENEEN CORMAN



to be placed on the  
agenda for Dec 16 2009  
if you please

---

---

**STAFF REPORT**

---

---

**TO:** TONY LARA, GENERAL MANAGER  
**FROM:** JULIE SALINAS, BUSINESS MANAGER  
**SUBJECT:** 1026 WELLWOOD AVE  
**DATE:** 12/28/2009

---

**BACKGROUND**

Deneen Carman signed into service at 1026 Wellwood Ave on February 23, 2004. Mrs. Carman received three bills from the District prior to the disputed high bill dated 10/19/04.

Bill Date	Meter Read	Consumption	Bill Amount
04/19/04	4616	27	33.86
06/18/04	4644	28	36.40
08/18/04	4691	47	50.19
10/19/04	5096	405	325.85
12/20/04	5127	27	39.11

In researching the customer's past activity, Staff came across an office order dated 10/25/04 (Attachment 1) where the customer phoned in a high bill inquiry. Our Customer Service Representative met with the consumer on 10/27/04 at 3:10pm. The meter reading at the time was 5102 and field comments noted on the office order were "met with consumer & notified her of a leak on her side."

The District did extend a special payment arrangement plan where the customer would pay the current bill plus an additional \$10.00 towards the delinquent balance. If the customer paid by the due date shown on the billing statement, no penalties would be assessed. Over the past five years, 75% of the payments were received after the due date. As of 12/04/09, the delinquent account balance is \$336.85

District Management and Staff met with Mrs. Carman's fiance to discuss the delinquent balance. The customer maintains that there is no feasible way that he and his fiance used that much water and requested that the bill be waived entirely or adjusted to reflect average usage.



In reading through past minutes, Staff found one instance (March 8, 2006) where a customer appeared before the Board to dispute a \$1200 bill.

“President Brey offered to work with the Dominguez’s and offered a payment plan for a year and then even offered a two year plan. The Dominguez’s and the Board continued to discuss the situation. After several comments and suggestions President Brey suggested charging for the water consumption only less 10%, and further removing the service charge of \$35.00 and the power charge of \$93.80, leaving the bill at approximately \$900. The Dominguez’s accepted this proposal stating they had no other choice. President Brey thanked them for their time and consideration.

President Brey proposed charging for water consumption only less 10%, removal of power charge and service charge to be paid on a 2 year payment plan with consensus of the board.”

To extend the same offer to Mrs. Carman would mean a reduction from \$325.85 to \$280.67 (adjustment total \$40.18). If the District were to honor the customer’s request to adjust the bill to reflect average usage, Staff has calculated the bill to be \$56.35 (Adjustment total \$269.50). Average usage for the past five October billing periods has been 57 units. Billing calculations were done using rates in effect at the time of the 10/19/04 billing.

***Recommendation:** In order to bring the account current, set up 6 bi-monthly payments in the amount of \$56.14. Payments could be made in addition to the current balance or on alternative months (the standard payment arrangement being offered to the District’s customer is ½ upfront and balance within 15 days).*

BLOOMINGTON CHERRY VALLEY WATER DISTRICT  
OFFICE ORDER

Date 10/25/02

Service Date 10/27/02

Account # 300672-01

Owner/Renter Name D. Carman

Meter # 29199426 5/8"

Telephone 909-915-7625

Previous Read/Date 5096 10/1/02 4691 8/18/02

Appt. Time \_\_\_\_\_

Service Address 10210 Wellwood

Cross Street \_\_\_\_\_

High Bill Inquiry \_\_\_\_\_  
Special Read (Office) \_\_\_\_\_  
Opening Read \_\_\_\_\_  
Closing Read \_\_\_\_\_  
Turn Water On \_\_\_\_\_  
Turn Water Off \_\_\_\_\_  
Pressure Check \_\_\_\_\_  
Turn Off For Repair \_\_\_\_\_  
Quality Complaint \_\_\_\_\_  
(Taste/Odor/Turbidity)  
Other \_\_\_\_\_

X <sup>nonconsumer</sup> request

Date \_\_\_\_\_ Time \_\_\_\_\_

Field Rep. T. COUS

Date/Time Completed 10-27-04 3:10

Meter Reading 51102.00

Field Comments met w/ consumer

& NOTIFIED HER OF

A LEAK ON HER SIDE

KB

---

*Noble Creek Artificial Recharge Facility  
Third Quarter 2009  
Ground Water Monitoring Report  
(July 16 to September 30, 2009)*



*Prepared for: Beaumont Cherry Valley Water District*

*January 8, 2010*

*GEOSCIENCE Support Services, Inc.*

*Tel: (909) 451-6650*

*Fax: (909) 451-6638*

*Mailing: P.O. Box 220, Claremont, CA 91711*

*620 W. Arrow Highway, Suite 2000, La Verne, CA 91750*

*www.gssiwater.com*

**NOBLE CREEK ARTIFICIAL RECHARGE FACILITY  
THIRD QUARTER 2009  
GROUND WATER MONITORING REPORT  
(JULY 16 TO SEPTEMBER 30, 2009)**

**CONTENTS**

**1.0 INTRODUCTION ..... 1**

    1.1 Purpose and Scope ..... 1

    1.2 Location and Site Overview ..... 1

    1.3 Previous Studies ..... 2

**2.0 MONITORING FEATURES AND ACTIVITES..... 3**

    2.1 Spreading Basin Inflow Meters ..... 3

    2.2 Staff Gages ..... 3

    2.3 Pumping Well Data ..... 3

    2.4 Monitoring Wells..... 4

**3.0 FINDINGS ..... 6**

    3.1 Basin Inflow ..... 6

    3.2 Pumping Trends..... 6

    3.3 Ground Water Elevation Trends..... 6

        3.3.1 Phase I Monitoring Wells ..... 6

        3.3.2 Other Monitoring Wells..... 7

**4.0 RECOMMENDATIONS..... 8**

**5.0 REFERENCES..... 9**

**FIGURES, TABLES**

## FIGURES

No.	Description
1	General Location – Noble Creek Artificial Recharge Site
2	Monitoring Well Locations
3	Spreading Basin Inflow
4	Deep Aquifer Ground Water Levels and BCVWD Well No. 23 Production Volume
5	Ground Water Elevations – Phase I Shallow Monitoring Wells
6	Ground Water Elevations – Phase I Deep Monitoring Wells
7	Ground Water Elevations – Phase II Monitoring Wells

## TABLES

<b>No.</b>	<b>Description</b>
1	Summary of Phase I Artificial Recharge Basins - Northwestern 40 Acres
2	Summary of Monitoring Well Construction Details

**NOBLE CREEK ARTIFICIAL RECHARGE FACILITY  
THIRD QUARTER 2009  
GROUND WATER MONITORING REPORT  
(JULY 16 TO SEPTEMBER 30, 2009)**

**1.0 INTRODUCTION**

**1.1 Purpose and Scope**

This report summarizes geohydrologic data collected at Beaumont Cherry Valley Water District's (BCVWD) Noble Creek Artificial Recharge Facility (Recharge Facility) during the period between July 16 and September 30, 2009. The data collected include ground water levels, recharge basin inflow volumes, and daily well production volumes.

**1.2 Location and Site Overview**

The Recharge Facility is located on an 80-acre parcel of land north of Beaumont, California located on the east side of Beaumont Avenue between Brookside Avenue and Cherry Valley Boulevard (see Figure 1). Noble Creek flows from the northeast corner of the parcel to the southwest corner, dividing the parcel in two. To date, artificial recharge basins have been constructed on the northwest 40 acres only (Phase I; see Figure 2). The source of artificial recharge has been imported water via the State Water Project, as supplied by the San Geronio Pass Water Agency.

The Phase I artificial recharge basins are configured with three chains of basins: the 1st chain includes two basins (1a and 1b), the 2nd chain has two additional basins (2a and 2b), and the 3rd chain has four basins (3a, 3b, 3c, and 3d; see Figure 2). The bottom areas of the individual basins range in size from 0.04 acres to 1.79 acres (see Table 1). Water can be conveyed to

individual basin chains or all three basin chains simultaneously. The introduction of water to the Phase I spreading basins began on September 5, 2006, although inflow data was not recorded by BCVWD until September 14, 2006.

### 1.3 Previous Studies

This report is one of a series of monitoring reports for the BCVWD recharge facility beginning May 10, 2007. Reports with data and information pertinent to the recharge facility include:

- GEOSCIENCE, 2002. DRAFT Geohydrologic Investigation Noble Creek Artificial Recharge Study. Prepared for Beaumont Cherry Valley Water District. July 1, 2002.
- GEOSCIENCE, 2005. Ground Water Recharge Implementation Plan - Noble Creek Artificial Recharge Facility. Prepared for Beaumont Cherry Valley Water District. May 27, 2005.
- GEOSCIENCE, 2006. Updated Progress of Artificial Recharge Activities at the Noble Creek Artificial Recharge Facility. December 22, 2006.
- GEOSCIENCE, 2007. Results of Drilling, Construction and Testing Clustered Monitoring Wells MW-3, MW-4 and MW-5 – Noble Creek Artificial Recharge Facility. January 26, 2007.
- GEOSCIENCE, 2007 - 2009. Ground Water Monitoring Reports for the Noble Creek Recharge Facility. First Quarter 2007 to Second Quarter 2009.



## **2.0 MONITORING FEATURES AND ACTIVITIES**

Artificial recharge operations at the Recharge Facility are monitored via multiple monitoring features including totalizing flow meters, staff gages, pressure transducers, three monitoring well clusters installed adjacent to the Phase I basins, and three monitoring wells installed in the area of the test phase basin located in the southern 40 acres of the parcel (i.e., Phase II area). Production volumes from nearby BCVWD Well No. 23 are also monitored to evaluate the effect of pumping on ground water levels beneath the basins.

### **2.1 Spreading Basin Inflow Meters**

The inflow of water to the primary spreading basin (1a, 2a, and 3a) within each chain of basins is monitored via inline totalizing flow meters connected to the water supply conveyance pipelines. The instantaneous flow rate and total volume of water supplied to each of the primary basins are currently being monitored on a daily basis by BCVWD personnel.

### **2.2 Staff Gages**

Graduated staff gages were installed within the bottom of Basins 2b, 3a, 3b, 3c, and 3d in order to monitor the depth of surface water within each basin. If possible, surface water levels at the staff gages are recorded by GEOSCIENCE personnel on an approximate monthly basis. During the course of field monitoring events, it has been observed that several staff gages are in need of replacement, repair, or readjustment to changing basin bottom elevations. It is recommended that these gages be maintained regularly such that basin surface water depth can be accurately measured.

### **2.3 Pumping Well Data**

The volume of water extracted by BCVWD Well No. 23 is monitored using an inline flow meter and totalizer and recorded by BCVWD personnel on a daily basis. Ground water levels in the

well and the pumping status at the time of measurement are also recorded by BCVWD personnel on a daily basis.

## 2.4 Monitoring Wells

In order to monitor ground water level and ground water quality changes during artificial recharge activities, monitoring well clusters have been constructed at three locations within the Phase I facility (see Figure 2). Each cluster consists of two monitoring wells: one well completed within the shallow aquifer system (MW-3S, 4S, and 5S), and one well completed within the intermediate (regional) aquifer system (MW-3D, 4D, and 5D).

Three monitoring wells were installed in the Phase II area during the initial geohydrologic investigation of 2002. Two of these monitoring wells were completed within the intermediate aquifer systems (MW-1 and MW-2), and one of the wells was completed within the shallow aquifer system (BH-1).

Each of the monitoring wells situated within the Phase I facility were outfitted with pressure transducers in order to measure and record ground water levels on a semi-continuous basis (15 minute intervals). On December 13, 2008, the pressure transducers were reprogrammed to record ground water levels at one-hour intervals in an effort to reduce the amount of data collected. Currently, the data from each pressure transducer is downloaded to a laptop computer on an approximate monthly basis by GEOSCIENCE personnel.

During the period between January 12 and March 4, 2009, the pressure transducer installed within the deep completion of MW-4 failed. GEOSCIENCE personnel reinstalled the transducer on April 13, 2009.

Ground water levels within each of the monitoring wells are also measured by GEOSCIENCE personnel using an electric water level sounder on an approximately monthly basis. These

measurements provide data for those monitoring wells not outfitted with pressure transducers and act as an independent cross-check for those wells with pressure transducers.

A summary of construction details for all monitoring wells at the Recharge Facility is provided in Table 2.

## **3.0 FINDINGS**

### **3.1 Basin Inflow**

Inflow of surface water to the spreading basins began on September 5, 2006 (see Figure 3). On June 4, 2007, inflow to the basins ceased when water deliveries from the State Water Project were temporarily stopped. Inflow resumed on October 29, 2007. A total of approximately 14,549 acre-ft of imported State Project Water has been conveyed to Phase I Basins 1a, 2a, and 3a as of September 30, 2009. Of that amount, 1,475 acre-ft was conveyed during the third quarter of 2009. According to daily inflow records<sup>1</sup>, the majority of imported water has been conveyed to Basins 1a (50 percent) and 2a (30 percent), while Basin 3a has received 20 percent of the total inflow. Inflow to the secondary basins (1b, 2b, 3b, 3c, and 3d) occurs only when the maximum capacity of the primary basins is exceeded causing water to flow through basin interconnects.

### **3.2 Pumping Trends**

On June 21, 2009, Well No. 23 was taken out of service for maintenance. It was not reactivated during this monitoring period. Figure 4 shows weekly production volumes for well No. 23.

### **3.3 Ground Water Elevation Trends**

#### **3.3.1 Phase I Monitoring Wells**

Ground water levels measured in the shallow completion monitoring wells (MW-3S, 4S, and 5S) are plotted on Figure 5. Water levels measured in the deep completion monitoring wells (MW-3D, 4D, and 5D) are plotted on Figure 6. The data show that ground water levels in

---

<sup>1</sup> Discharge meters at the Noble Creek Artificial Recharge Facility were taken off-line for repairs from September 23 to October 16, 2006. Therefore, daily inflow rates for Basins 1a, 2a, and 3a during this period were estimated using instantaneous flow rates (measured in gallons per minute) at the San Geronio Pass Station, where all project water is diverted to the recharge facility.

MW-3S, 4S, and 5S have risen throughout the monitoring period by 6.9 ft, 3.6 ft, and 4.1 ft, respectively, and that water levels in MW-3D and 5D have risen by 0.5 ft and 3.7 ft respectively. Water levels in MW-4D have declined by 0.7 ft. Generally, the data show an overall increasing ground water level trend in both the shallow and deep monitoring wells since artificial recharge activities began.

Figure 4 shows the relationship between ground water levels in MW-3D and 4D and weekly production volumes from nearby BCVWD Well No. 23. The data indicate a general correlation between overall ground water level trends in MW-3D and 4D and production from Well No. 23. Specifically, ground water levels show an increasing trend during the fall and winter months, likely reflective of decreased ground water production from Well No. 23 and other wells in the Beaumont Storage Unit. Conversely, ground water levels show a decreasing trend during the spring and summer months, a period of increased ground water production. The short-term ground water level fluctuations observed in MW-3D and 4D are attributed to interference from cyclic pumping of nearby BCVWD Well No. 23.

### **3.3.2 Other Monitoring Wells**

Ground water elevations for the monitoring wells in the Phase II area (BH-1, MW-1, and MW-2) are shown on Figure 7. Ground water levels in the shallow completion well (BH-1) have increased approximately 1.2 feet during the third quarter of 2009, likely resulting from recharge to the shallow aquifer system from the Recharge Facility. Ground water levels in the deep completion monitoring wells (MW-1 and MW-2) have been fluctuating since monitoring began in September 2006 and have decreased by 0.5 and 0.8 ft during the third quarter of 2009.

#### 4.0 RECOMMENDATIONS

Ground water monitoring should continue in order to evaluate impact to ground water levels beneath the basins during artificial recharge operations. Pressure transducers continue to record ground water levels, and it is recommended that hand measurements of ground water levels continue on a monthly basis as a cross-check to the transducer data. Additionally, field monitoring allows for the condition and functionality of the pressure transducers to be checked on a regular basis.

It has been observed that several staff gages are in need of replacement, repair, or readjustment to changing basin bottom elevations. Additionally, staff gages were never installed in Basins 1a, 1b, and 2a due to the basins being wetted at the time of installation. It is recommended that gages be installed in basins that do not have them, and that existing gages be regularly maintained such that basin surface water depth can be accurately measured. The following table presents the status of staff gages in each of the basins:

Basin	Current Condition	Recommended Action
1a	Not Installed	Install
1b	Not Installed	Install
2a	Not Installed	Install
2b	Undamaged	None
3a	Tilted	Repair / Replace
3b	Above Basin Grade	Replace
3c	Missing	Replace
3d	Missing	Replace

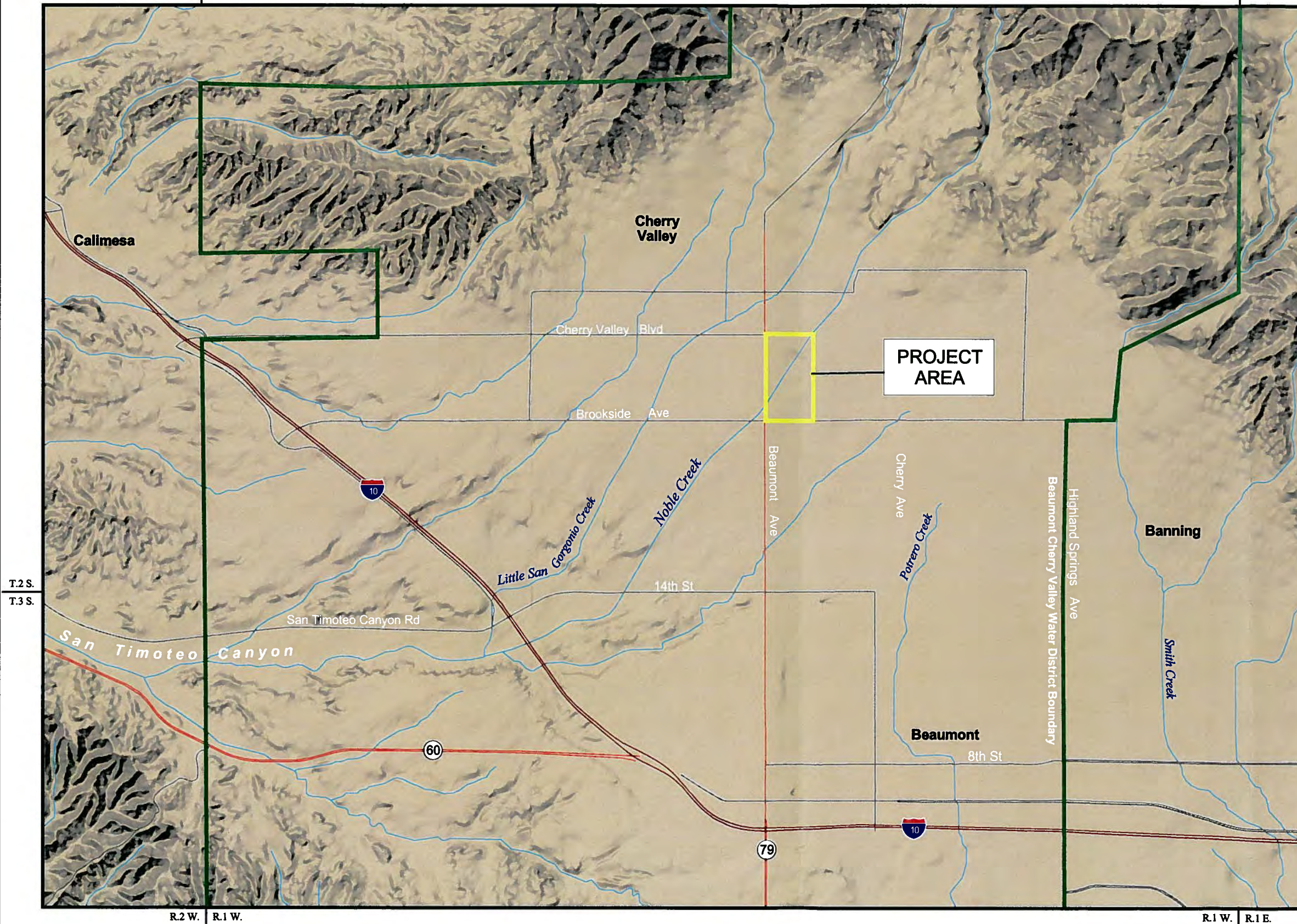
## 5.0 REFERENCES

- Bouwer, H., 2002. Artificial Recharge of Groundwater: Hydrogeology and Engineering. Hydrogeology Journal 10:121-142.
- GEOSCIENCE, 2002. DRAFT -- Geohydrologic Investigation Noble Creek Artificial Recharge Study. Prepared for Beaumont Cherry Valley Water District. July 1, 2002.
- GEOSCIENCE, 2005. Ground Water Recharge Implementation Plan - Noble Creek Artificial Recharge Facility. Prepared for Beaumont Cherry Valley Water District. May 27, 2005.
- GEOSCIENCE, 2006. Updated Progress of Artificial Recharge Activities at the Noble Creek Artificial Recharge Facility. Prepared for the Beaumont Cherry Valley Water District. December 22, 2006.
- GEOSCIENCE, 2007. Results of Drilling, Construction and Testing Clustered Monitoring Wells MW-3, MW-4 and MW-5 – Noble Creek Artificial Recharge Facility. January 26, 2007.
- GEOSCIENCE, 2007. Quarterly Ground Water Monitoring Report, First Quarter 2007 – Noble Creek Recharge Facility. May 10, 2007.
- GEOSCIENCE, 2007. Quarterly Ground Water Monitoring Report, Second Quarter 2007 – Noble Creek Recharge Facility. July 17, 2007.
- GEOSCIENCE, 2008. Noble Creek Artificial Recharge Facility Ground Water Monitoring Report (October 29, 2007 to May 30, 2008). June 16, 2008.
- GEOSCIENCE, 2008. Noble Creek Artificial Recharge Facility Ground Water Monitoring Report (May 31, 2008 to September 12, 2008). October 17, 2008.
- GEOSCIENCE, 2009. Noble Creek Artificial Recharge Facility Ground Water Monitoring Report (September 13, 2008 to January 12, 2009). March 10, 2009.
- GEOSCIENCE, 2009. Noble Creek Artificial Recharge Facility First Quarter 2009 Ground Water Monitoring Report (January 13 to April 13, 2009). June 4, 2009.

GEOSCIENCE, 2009. Noble Creek Artificial Recharge Facility Second Quarter 2009 Ground Water Monitoring Report (April 14 to July 15, 2009). Jul 27, 2009.

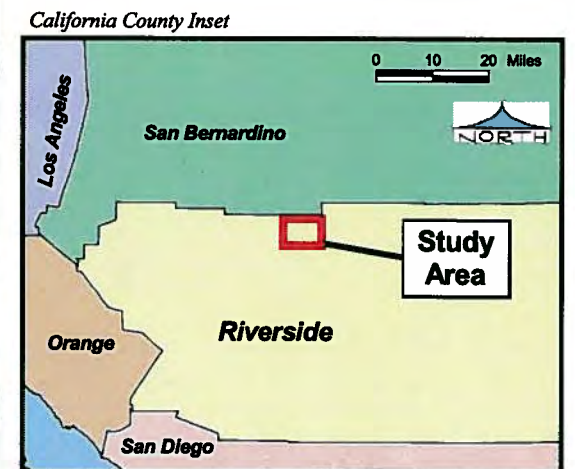


GENERAL LOCATION  
NOBLE CREEK  
ARTIFICIAL RECHARGE  
SITE



EXPLANATION

- Project Area Boundary
- Beaumont Cherry Valley Water District Boundary



8-Jan-09

Prepared by: DWB

Map Projection: UTM 1927, Zone 11

Page 57 of 76 of the Regular Meeting Agenda

GIS\_proj\bcvwd\_art\_rech\_mon\_3rdqtr2009\_1-10\bcvwd\_3rdqtr2009\_mon\_rpt\_1-10.spr

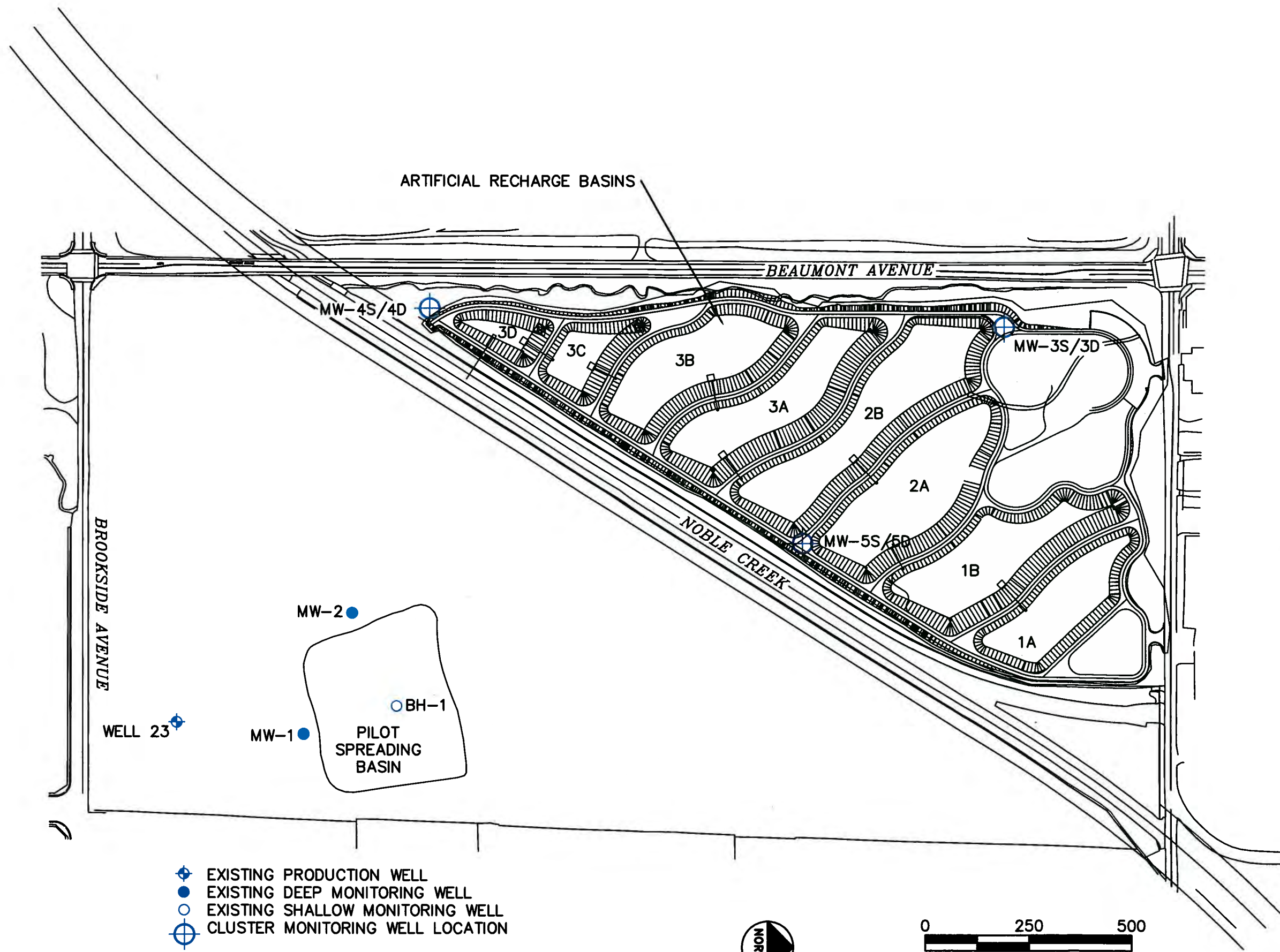


**GEOSCIENCE**

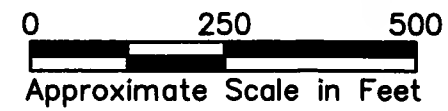
GEOSCIENCE Support Services, Inc.  
P.O. Box 220, Claremont, CA 91711  
Tel: (909) 451-6650 Fax: (909) 451-6638  
www.gswater.com

Figure 1





- ◆ EXISTING PRODUCTION WELL
- EXISTING DEEP MONITORING WELL
- EXISTING SHALLOW MONITORING WELL
- ⊕ CLUSTER MONITORING WELL LOCATION



GEOSCIENCE Support Services, Incorporated  
 P.O. Box 220, Claremont, CA 91711  
 Tel: (909)451-6650 Fax: (909)451-6638  
 www.geosciwater.com

BEAUMONT CHERRY VALLEY WATER DISTRICT

## MONITORING WELL LOCATIONS

Drawn: PLP

Checked:

Approved:

Date: 8-JAN-10

**Figure 2**

JN 15061-05

### Spreading Basin Inflow

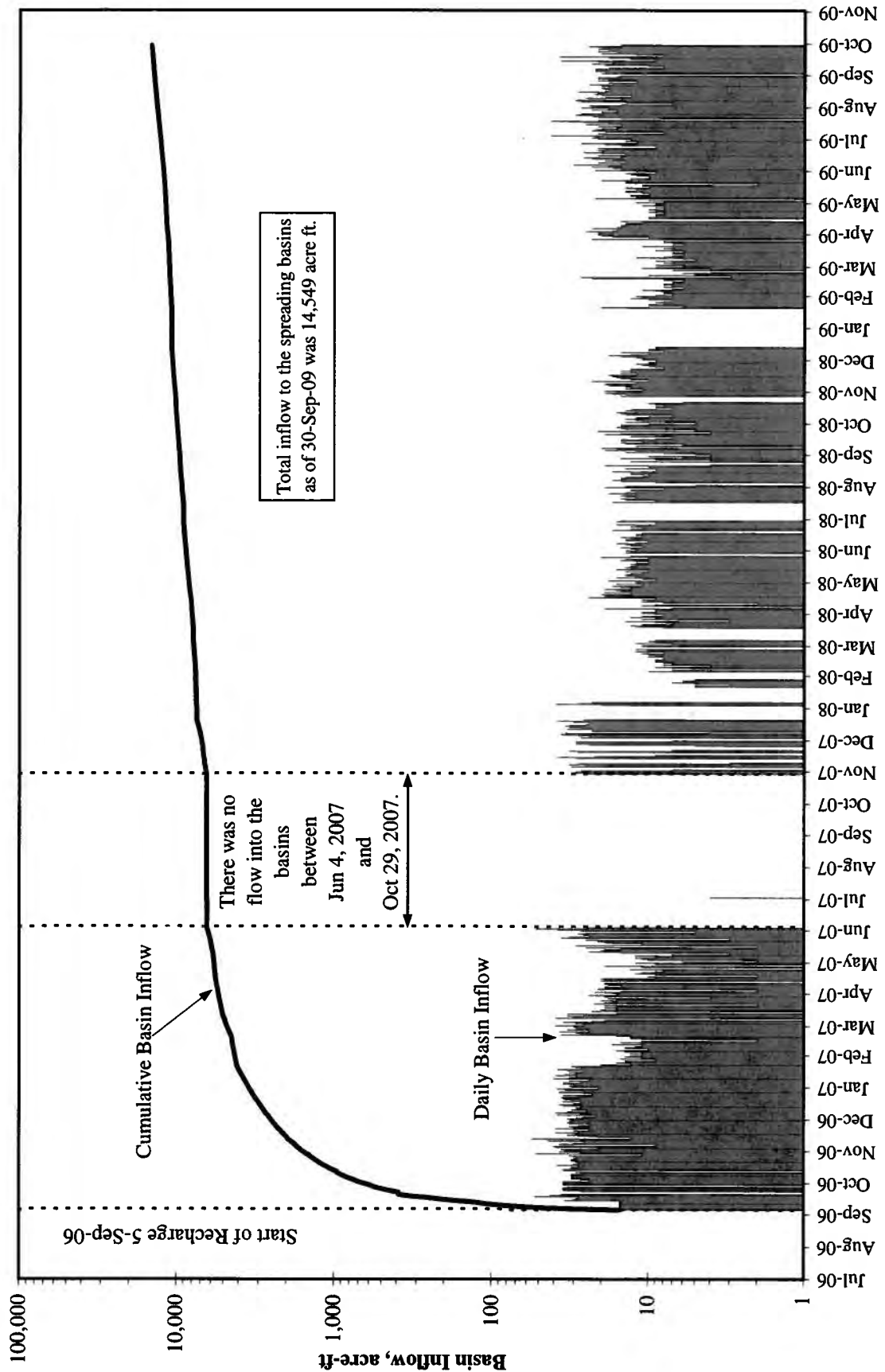


Figure 3

### Deep Aquifer Ground Water Levels and BCVWD Well No. 23 Production Volume

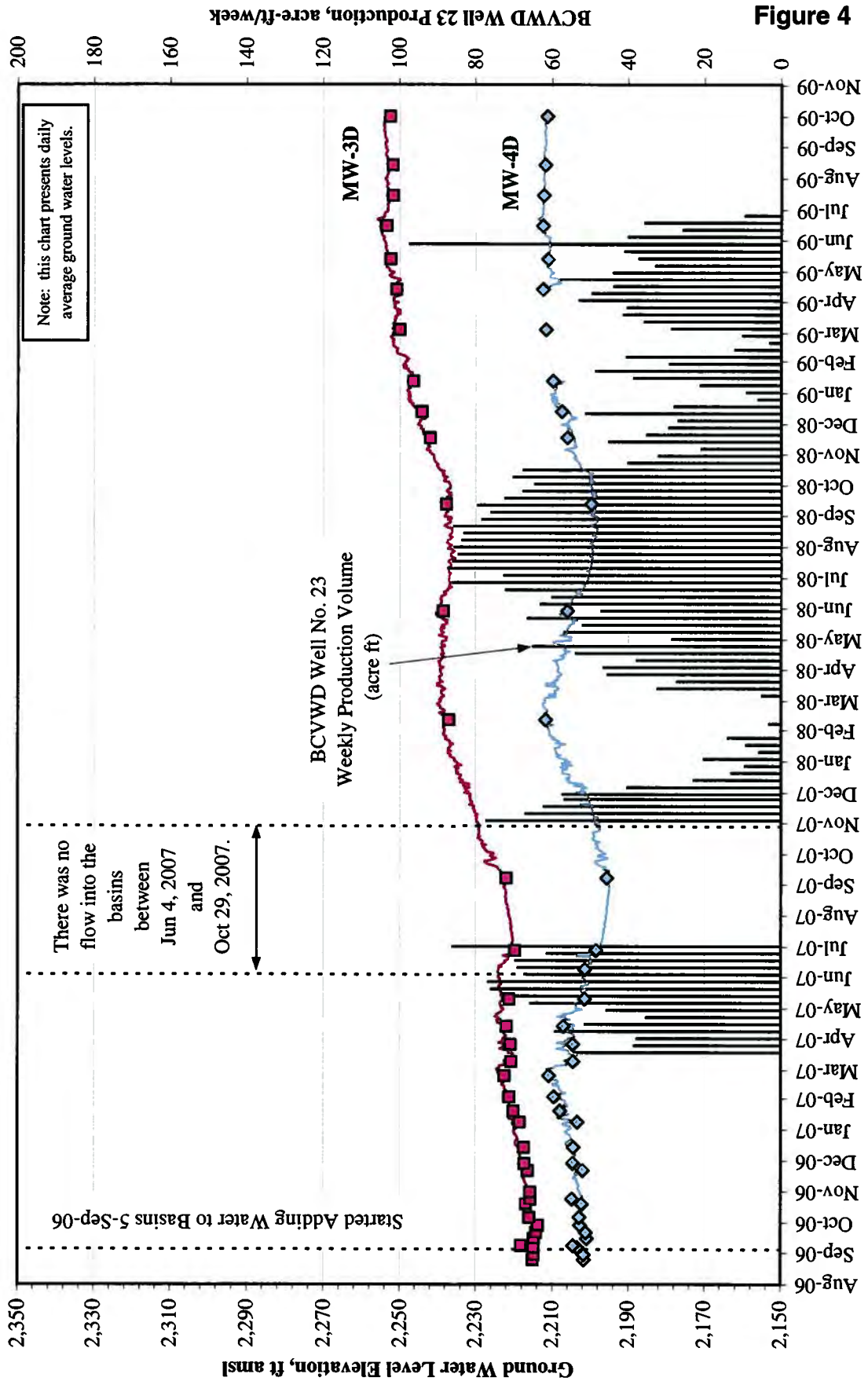
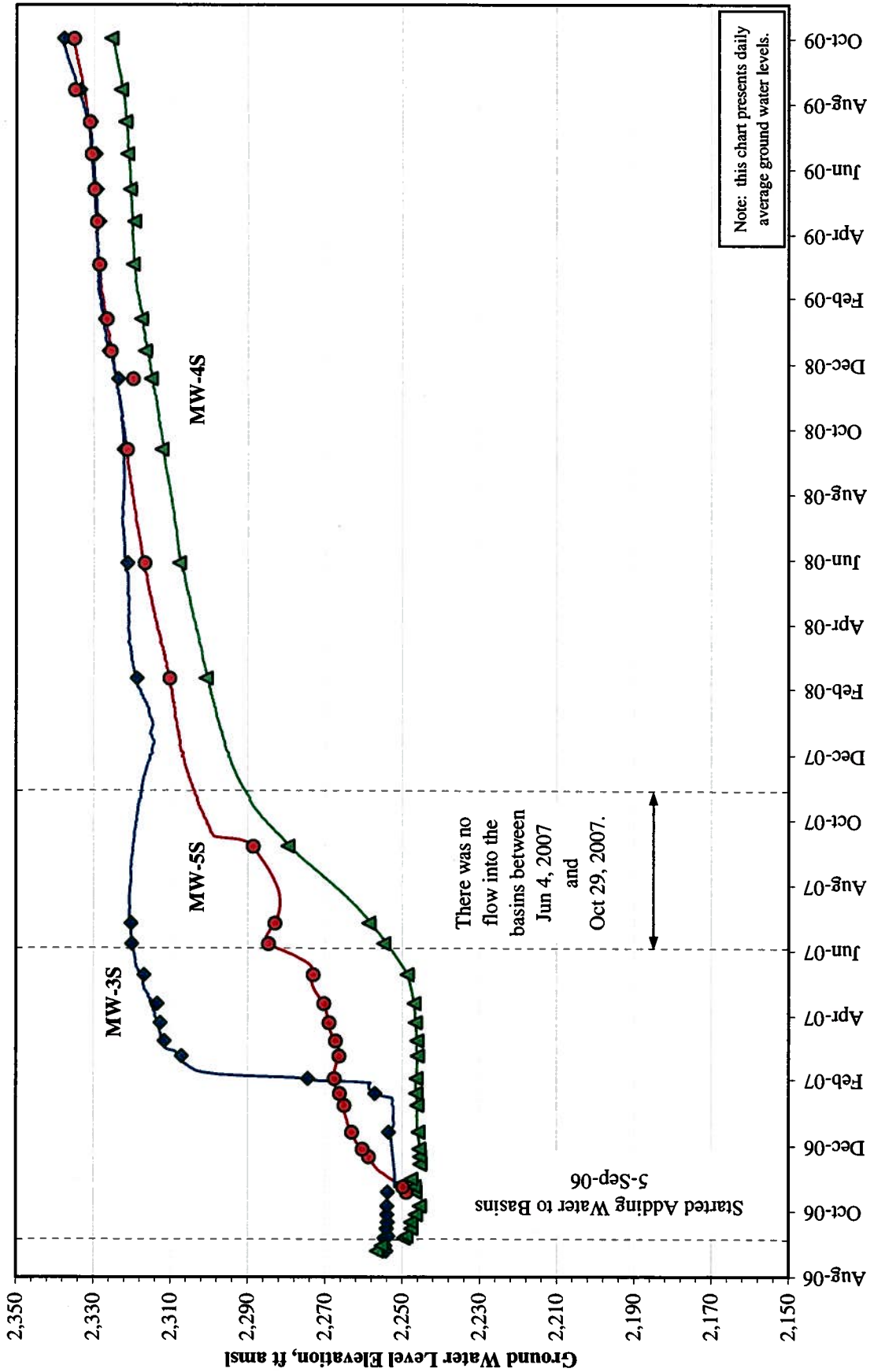


Figure 4

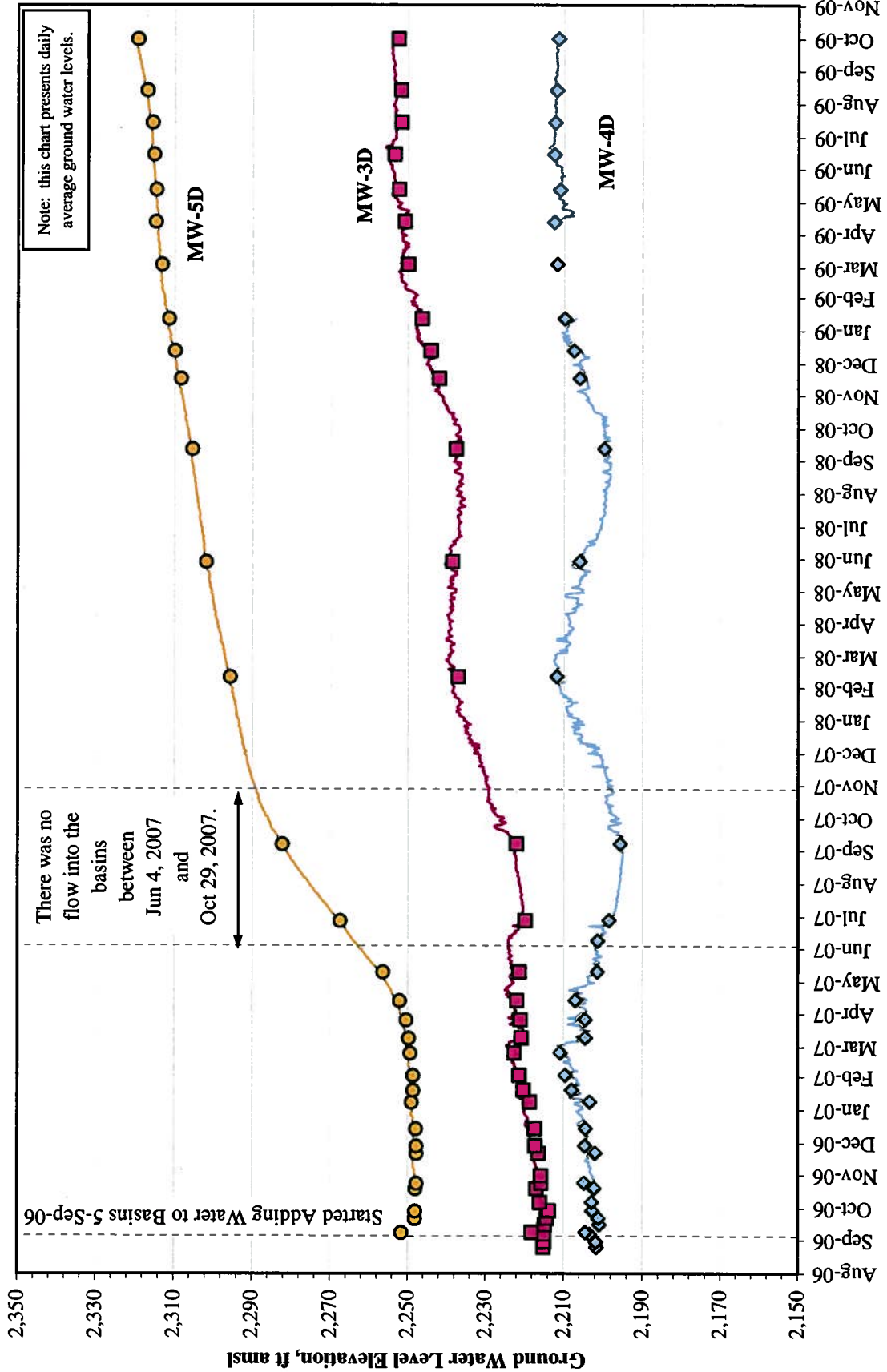
**Ground Water Elevations  
 Phase I Shallow Monitoring Wells**



**Figure 5**

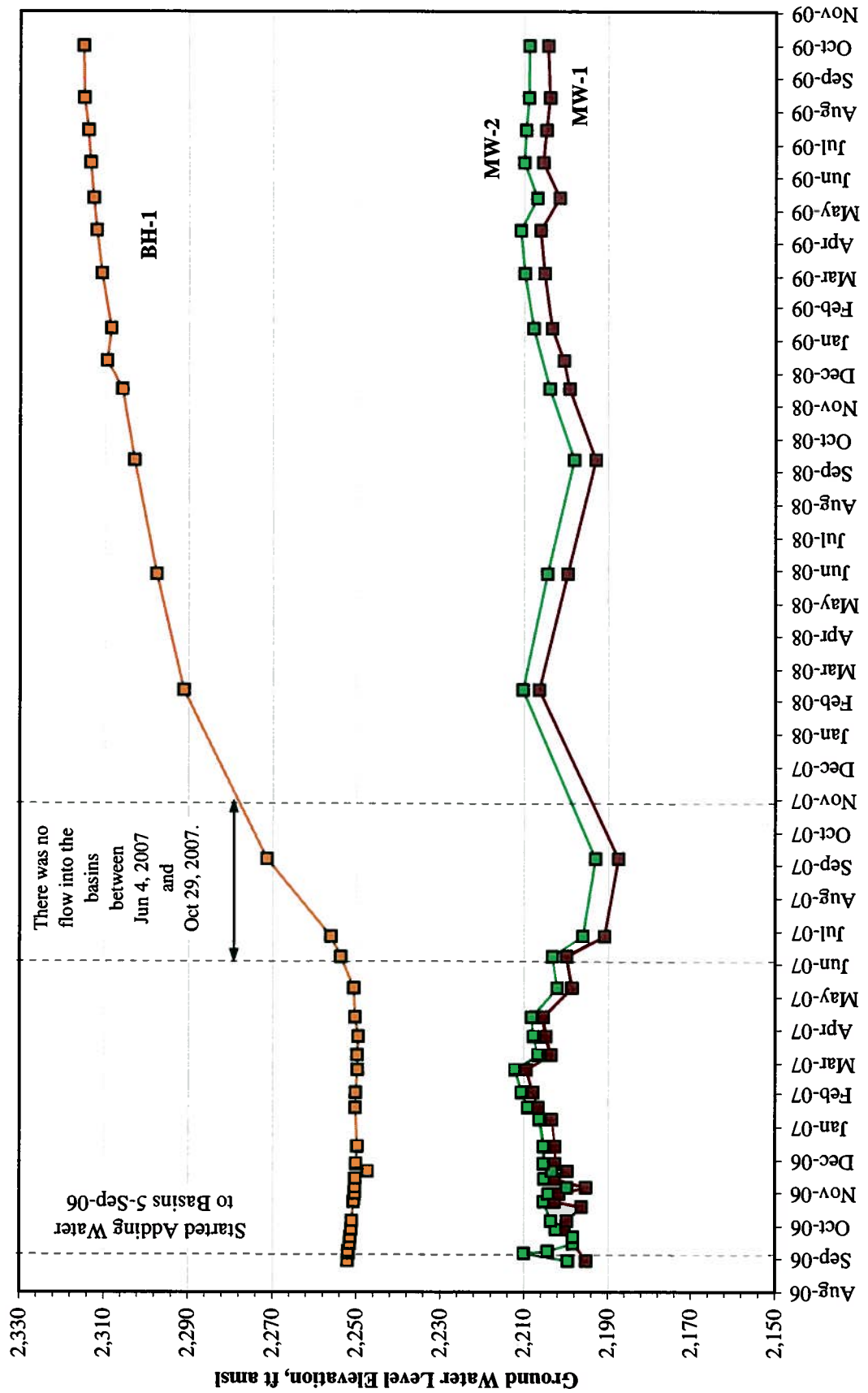


**Ground Water Elevations  
 Phase I Deep Monitoring Wells**



**Figure 6**

**Ground Water Elevations  
 Phase II Monitoring Wells**



**Figure 7**

**TABLES**



Summary of Phase I Artificial Recharge Basins – Northwestern 40 Acres

Recharge Basin No.	Bottom Area [Acres]	Wetted Area [Acres] <sup>1</sup>
1A	0.95	1.19
1B	1.19	1.50
2A	1.72	2.02
2B	1.79	2.18
3A	1.17	1.48
3B	1.14	1.39
3C	0.26	0.36
3D	0.04	0.09
<b>Total</b>	8.26	10.21

<sup>1</sup> Assume 3:1 side slopes and 3.5 ft water depth.

Summary of Monitoring Well Construction Details

Monitoring Well Designation	Reference Point Elevation [ft amsl]	Borehole Depth [ft bgs]	Casing Depth [ft bgs]	Casing Inner Diameter [inches]	Blank Casing Material	Perforation Interval [ft bgs]	Perforation Type and Casing Material
MW-3 Deep	2,774.5	734	715	4	Sch. 40 Mild Steel	600-705	0.086" Vertical Mill Slots Sch. 40 Mild Steel
MW-3 Shallow	2,775.2	553	530	3.8	Sch. 80 PVC	480-520	0.050" Wirewrap Stainless Steel
MW-4 Deep	2,739.3	733	715	4	Sch. 40 Mild Steel	600-705	0.086" Vertical Mill Slots Sch. 40 Mild Steel
MW-4 Shallow	2,740.2	553	530	3.8	Sch. 80 PVC	480-520	0.050" Wirewrap Stainless Steel
MW-5 Deep	2,778.6	730	715	4	Sch. 40 Mild Steel	600-705	0.086" Vertical Mill Slots Sch. 40 Mild Steel
MW-5 Shallow	2,779.4	576	560	3.8	Sch. 80 PVC	480-550	0.050" Wirewrap Stainless Steel
MW-1	2,747.4	1,020	1,014	4	Sch. 40 Mild Steel	603-1,014	0.060" Vertical Mill Slots Sch. 40 Mild Steel
MW-2	2,752.9	1,010	1,008	4	Sch. 40 Mild Steel	594-1,008	0.060" Vertical Mill Slots Sch. 40 Mild Steel
BH-1	2,756.3	519	519	1.9	Sch. 80 PVC	479-519	0.060" Horizontal Mill Slots Sch. 80 PVC

Notes:

ft amsl = feet above mean sea level  
 ft bgs = feet below ground surface

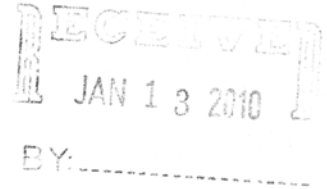
# Cherry Valley Water Company

A California Non-Profit Corporation

INCORPORATED APRIL 13, 1960  
P.O. BOX 3166  
BEAUMONT, CA 92223  
(714) 845-5655

January 8, 2010

Board of Directors  
Beaumont Cherry Valley Water District  
560 Magnolia Avenue  
Beaumont, CA 92223



Dear Board Members:

Our December water bill reflected an out-of-district rate for water, as opposed to the in-district rate for water which we have been paying since we started buying water from BCVWD. We are asking for a variance in your charges to continue to be charged the in-district rates.

Beaumont Cherry Valley Water District is selling us water. They are not reading our meters, they are not sending out bills, they are not responsible for collecting payment, they are not maintaining our water system. These are the normal benefits of a customer. Therefore, BCVWD is profiting from our water purchase with no expenditures on their part and is profiting with in-district rates.

Cherry Valley Water Company is negotiating with the District to become annexed. We are within your sphere of influence, and have no options as to which water district to become annexed. Our customers are paying for purchased water and paying the overhead for our water company. They are paying substantially more for water than your customers. They are looking forward to being annexed. These are your neighbors, and your intended customers.

We are requesting a board variance to continue to be charged the in-district rates for our purchases until we are fully annexed.

Sincerely yours,

A handwritten signature in cursive script that reads "Doyle Murray".

Doyle Murray  
President, Board of Directors

cc: Anthony Lara

**RESOLUTION NO. 2010-01**

**RESOLUTION OF THE BOARD OF DIRECTORS  
OF THE BEAUMONT CHERRY VALLEY WATER DISTRICT (DISTRICT)  
DECLARING THE OFFICIAL INTENT TO BE REIMBURSED  
FOR CERTAIN CAPITAL EXPENDITURES  
FROM THE PROCEEDS OF INDEBTEDNESS**

**(Recycled Water Facilities Project)**

**WHEREAS**, Section 1.150-2 of the U.S. Department of Treasury Regulations requires the District to declare its reasonable official intent to be reimbursed for prior capital expenditures made for the Recycled Water Facilities Project with proceeds of a subsequent borrowing;

**WHEREAS**, the District has paid, and will pay on or after the date hereof certain capital expenditures (the "Expenditures") in connection with the Recycled Water Facilities Project prior to the issuance of one or more series of tax-exempt bonds or other forms of indebtedness (the "Indebtedness") in the principal amount of not to exceed \$20,000,000 (twenty million dollars) for the purpose of financing costs associated with the Recycled Water Facilities Project; and

**WHEREAS**, the District reasonably expects that certain of the proceeds of the Indebtedness will be used to reimburse the District for the Expenditures.

**NOW, THEREFORE, BE IT RESOLVED, FOUND, DETERMINED and ORDERED**, that:

Section 1. This Board finds and determines that the foregoing recitals are true and correct.

Section 2. This declaration is made solely for purpose of establishing compliance with the requirements of Section 1.150-2 of the Treasury Regulations, and does not bind the District to make any expenditure, incur any indebtedness, or proceed with the Recycled Water Facilities Project.

Section 3. The District declares its official intent to use proceeds of the Indebtedness to reimburse itself for Expenditures made on or after the date which is no more than 60 days prior to the date hereof.

Section 4. The District will make a reimbursement allocation, which is a written allocation by the District that evidences the District's use of proceeds of the Indebtedness to reimburse itself for an Expenditure, no later than 18 months after the later of the date on which the Expenditure is paid or the Recycled Water Facilities Project is placed in service or abandoned, but in no event more than three years after the date on which the Expenditure is paid.

Section 5. The District recognizes that exceptions are also available under the Treasury Regulations for certain "preliminary expenditures," costs of issuance, certain *de minimum* amounts, expenditures by "small issuers" (based on the year of issuance and not the year of expenditure) and expenditures for construction projects of at least 5 years.

ADOPTED, SIGNED AND APPROVED, this 20<sup>th</sup> day of January, 2010.

Seal:

---

Blair Ball, President  
Beaumont Cherry Valley Water District  
and of the Board of Directors thereof

ATTEST:

---

Ryan Woll, Secretary  
Beaumont Cherry Valley Water District  
and the Board of Directors thereof

\*\*\*\*\*

I hereby certify that the foregoing resolution was passed and adopted by the Board of Directors of the Beaumont Cherry Valley Water District, Riverside County, California, at a meeting thereof held on the 20<sup>th</sup> day of January, 2010, by the following vote:

AYES:

NOES:

ABSENT:

VACANCY: One

---

Ryan Woll, Secretary  
Beaumont Cherry Valley Water District  
and of the Board of Directors thereof

APPROVED:

---

Blair Ball, President  
Beaumont Cherry Valley Water District  
and of the Board of Directors thereof



# LOCAL AGENCY FORMATION COMMISSION

215 North "D" Street, Suite 204 • San Bernardino, CA 92415-0490  
(909) 383-9900 • Fax (909) 383-9901  
E-mail: [lafco@lafco.sbcounty.gov](mailto:lafco@lafco.sbcounty.gov) • [www.sbclafco.org](http://www.sbclafco.org)

Established by the State of California to serve the Citizens, Cities, Special Districts and the County of San Bernardino



## COMMISSIONERS

PAUL BIANE  
Board of Supervisors

KIMBERLY COX  
Special District

JAMES V. CURATALO  
Special District

LARRY McCALLON  
City Member

BRAD MITZELFELT, Vice Chair  
Board of Supervisors

MARK NUAIMI, Chair  
City Member

RICHARD P. PEARSON  
Public Member

## ALTERNATES

JIM BAGLEY  
Public Member

NEIL DERRY  
Board of Supervisors

ROBERT W. SMITH  
Special District

DIANE WILLIAMS  
City Member

## STAFF

KATHLEEN ROLLINGS-McDONALD  
Executive Officer

SAMUEL MARTINEZ  
Senior LAFCO Analyst

MICHAEL TUERPE  
LAFCO Analyst

*Vacant*  
Clerk to the Commission

ANGELA M. SCHELL  
Deputy Clerk to the Commission

REBECCA LOWERY  
Deputy Clerk to the Commission

## LEGAL COUNSEL

CLARK H. ALSOP

DECEMBER 29, 2009

**TO: GENERAL/DISTRICT MANAGERS AND FIRE CHIEFS**  
**RE: NOTICE OF LAFCO HEARING – JANUARY 20, 2010**

Pursuant to the provisions of the Cortese-Knox-Hertzberg Local Government Reorganization Act of 2000 (Government Code Section 56661a), LAFCO is required to provide a mailed notice of hearing to each affected local agency by giving notice to the legislative body and the executive officer of the agency.

Enclosed is a copy of the Notice of Hearing for the Commission's January 20, 2010 hearing. Please reproduce and distribute a copy to each of the members of the Board of Directors.

Please contact our office if you have any questions.

Sincerely,

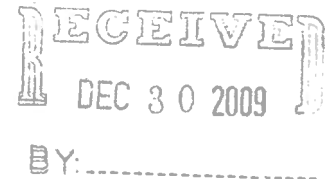
ANGELA SCHELL  
Deputy Clerk to the Commission

Encl.

# NOTICE OF HEARING

Notice is hereby given that the **LOCAL AGENCY FORMATION COMMISSION of San Bernardino County** will hold a public hearing:

JANUARY 20, 2010  
CITY OF SAN BERNARDINO  
CITY HALL - COUNCIL CHAMBERS  
300 North D Street, First Floor  
San Bernardino, California



Environmental documentation on the following projects is available for review in the staff office of the Local Agency Formation Commission. Anyone wishing to examine this documentation may contact the LAFCO staff office at 215 North D Street, Suite 204, San Bernardino, California 92415-0490, or call (909) 383-9900 within 21 days of this notice.

9:00 A.M. – Convene Regular Meeting

## CONSENT ITEMS:

1. Approval of Minutes for Regular Meetings of November 18 and December 16, 2009
2. Approval of Executive Officer's Expense Report
3. Ratify Payments as Reconciled for Month of December 2009 and Note Cash Receipts

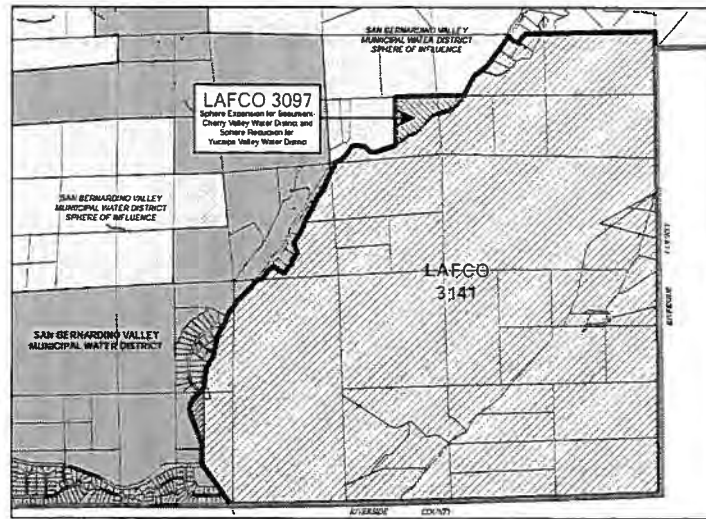
## CONTINUED/DISCUSSION ITEMS:

4. Consideration of: (1) Final Environmental Impact Report Adopted by City of Adelanto for South Adelanto Annexation (SCH No. 2007051115), as CEQA Responsible Agency for LAFCO 3083; (2) Adoption of Findings of Facts and Statement of Overwriting Considerations; and (3) LAFCO 3083 – Reorganization to Include City of Adelanto Annexation and Detachment from San Bernardino County Fire Protection District and its North Desert Service Zone and County Service Area 70 (**continued from the October 21, 2009 Hearing; to be continued to the April 21, 2010 Hearing**)
5. A. Consideration of: (1) CEQA Statutory Exemption for LAFCO 3141; and (2) LAFCO 3141 – Sphere of Influence Amendment for San Gorgonio Pass Water Agency (Expansion) and San Bernardino Valley Municipal Water District (Reduction) (**continued from the November 18, 2009 Hearing**)

The sphere amendment area encompasses approximately 2,164+/- acres in the eastern Yucaipa/Oak Glen area. The study area is generally bordered by a combination of the centerline of Oak Glen Road and parcel boundaries on the west, parcel boundaries on the north, and the Riverside/San Bernardino County line (existing San Gorgonio Pass Water Agency boundary and sphere) on the east and south.

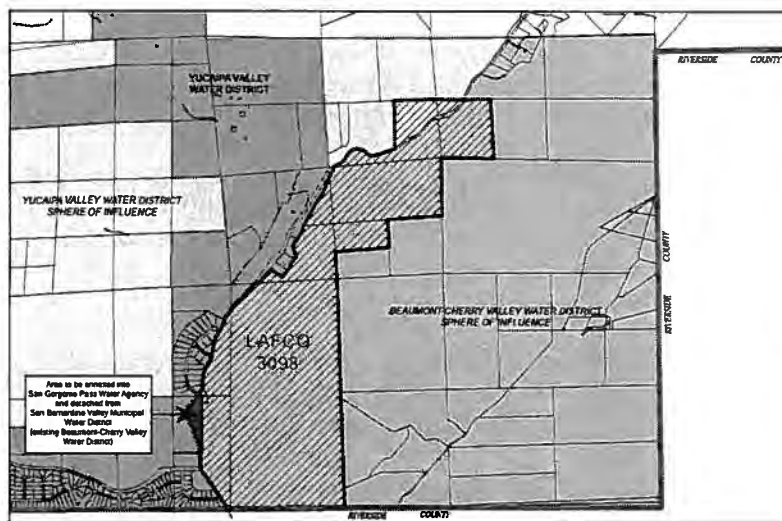
- B. Consideration of: (1) CEQA Statutory Exemption for LAFCO 3097; and (2) LAFCO 3097 – Sphere of Influence Amendment for Beaumont-Cherry Valley Water District (Expansion/Reduction) and Yucaipa Valley Water District (Reduction) (**continued from the November 18, 2009 Hearing**)

The sphere amendment area encompasses approximately 24+/- acres generally bordered by parcel lines on the west and north, and Oak Glen Road (existing BCVWD sphere boundary) on the east and south. The sphere amendment area includes portions of Sections 1 and 2, Township 2 South, Range 1 West, San Bernardino Meridian.



6. Consideration of: (1) CEQA Statutory Exemption for LAFCO 3098; and (2) LAFCO 3098 Reorganization to Include Annexations to Beaumont-Cherry Valley Water District and San Geronimo Pass Water Agency, and Detachment from San Bernardino Valley Municipal Water District **(continued from the November 18, 2009 Hearing)**

The reorganization area for annexation to Beaumont-Cherry Valley Water District and San Geronimo Pass Water Agency encompasses approximately 589+/- acres generally bordered by the Riverside County line on the south, a combination of parcel boundaries and Oak Glen Road (portion of existing BCVWD boundary) on the west, and parcel boundaries on the north and east. The reorganization area includes portions of Sections 1, 2, 10 and 11, Township 2 South, Range 1 West, San Bernardino Meridian. The area for annexation to San Geronimo Pass Water Agency and detachment from San Bernardino Valley Municipal Water District encompasses approximately 6+/- acres that includes Assessor Parcel Number 0325-111-24, and the easterly right-of-way of Oak Glen Road fronting the parcel.



7. Mid-Year Budget Review for Fiscal Year 2009-10
  - A. Finance Report Period July 1 through December 2, 2009
  - B. Discussion of Retirement Replacement Benefit Plan
  - C. Report from Transition Subcommittee



8. Service Review for the Communities of Indian Wells Valley, Red Mountain and Searles Valley located in the north desert portion of the County which includes a review of the Searles Domestic Water Company and the Following Sphere of Influence Update/Amendment Reviews:

- A. Consideration of: (1) CEQA Statutory Exemption for LAFCO 3025; and (2) LAFCO 3025 – Service Review and Sphere of Influence Update for County Service Area 82

The service review and sphere study area encompasses approximately 3.5+/- square miles and is generally located east of the Searles Mountain range, south of the Inyo County line, west of the Searles Dry Lake, and north of Poison Canyon. It includes all or portions of the unincorporated communities known as Pioneer Point, Trona, and Argus.

- B. Consideration of: (1) CEQA Statutory Exemption for LAFCO 3017; and (2) LAFCO 3017 – Service Review and Sphere of Influence Update for County Service Area 30

The service review and sphere study area encompasses an area of approximately 2 ½ square miles and located along Highway 395 which includes the community of Red Mountain. CSA 30 is bordered by the Kern County line on the west and is generally described as all that portion of the south 1/2 of Section 31 in T29S, R41E; and Sections 6 and 7 in T30S, R41E, Mount Diablo Meridian.

- C. Consideration of: (1) CEQA Statutory Exemption for LAFCO 3027; and (2) LAFCO 3027 – Service Review and Sphere of Influence Update for Indian Wells Valley Water District

The District is primarily located in Kern County and includes approximately nine square miles in San Bernardino County. The service review area is generally bordered by section lines on the east, the Rand Communities Water District on the south, the Kern County line on the west, and section lines on the north. The District includes territory north and south of Highway 178.

- D. Consideration of: (1) CEQA Statutory Exemption for LAFCO 3043; and (2) LAFCO 3043 – Service Review and Sphere of Influence Update for East Kern Healthcare District

The District is primarily located in Kern County and includes approximately three square miles in San Bernardino County. The study area is generally bordered by the Kern County line on the west and by section lines on the north, east, and south. The District includes the community of Red Mountain and territory east and west of Highway 395.

- E. Consideration of: (1) CEQA Statutory Exemption for LAFCO 3044; and (2) LAFCO 3044 – Service Review and Sphere of Influence Update for Rand Communities Water District

The District is primarily located in Kern County and includes approximately 120 square miles in San Bernardino County. The study area is generally bordered by the Kern County line on the west and by section lines on the north, east, and south. The District includes the community of Red Mountain and territory east and west of Highway 395.

- F. Consideration of: (1) CEQA Statutory Exemption for LAFCO 3145; and (2) LAFCO 3145 – Service Review and Sphere of Influence Update for California City Community Services District

The study area is generally bordered by the Kern County line on the west and comprises all of Section 19, Township 31 South, Range 41 East, Mount Diablo Meridian.

9. Status Report – LAFCO 3082 - Sphere of Influence Review (Expansions) for City of Victorville and Victorville Water District and LAFCO 3089 – Sphere of Influence Establishment for the Helendale Community Services District

10. Pending Legislation Report

11. Executive Officer's Oral Report

12. Commissioner Comments

(This is an opportunity for Commissioners to comment on issues not listed on the agenda, provided that the subject matter is within the jurisdiction of the Commission and that no action may be taken on off-agenda items unless authorized by law.)

13. Comments from the Public

(By Commission policy, the public comment period is limited to five minutes per person for comments related to items under the jurisdiction of LAFCO.)

The Commission may adjourn for lunch from 12:00 to 1:30 p.m.

In its deliberations, the Commission may make appropriate changes incidental to the above-listed proposals.

Current law and Commission policy require the publishing of staff reports prior to the public hearing. These reports contain technical findings, comments, and recommendations of staff. The staff recommendation may be accepted or rejected by the Commission after its own analysis and consideration of public testimony.

If you challenge any decision regarding the above proposals in court, you may be limited to raising only those issues you or someone else raised at the public hearing described in this notice or in written correspondence delivered to the LAFCO staff office at, or prior to, the public hearing.

A person with a disability may contact the LAFCO office at (909) 383-9900 at least 72-hours before the scheduled meeting to request receipt of an agenda in an alternative format or to request disability-related accommodations, including auxiliary aids or services, in order to participate in the public meeting. Later requests will be accommodated to the extent feasible.

LOCAL AGENCY FORMATION COMMISSION  
KATHLEEN ROLLINGS-McDONALD, Executive Officer

By: ANGELA M. SCHELL, Deputy Clerk to the Commission

# SPECIAL DISTRICT AND LOCAL GOVERNMENT INSTITUTE

Presents a Saturday Workshop on:

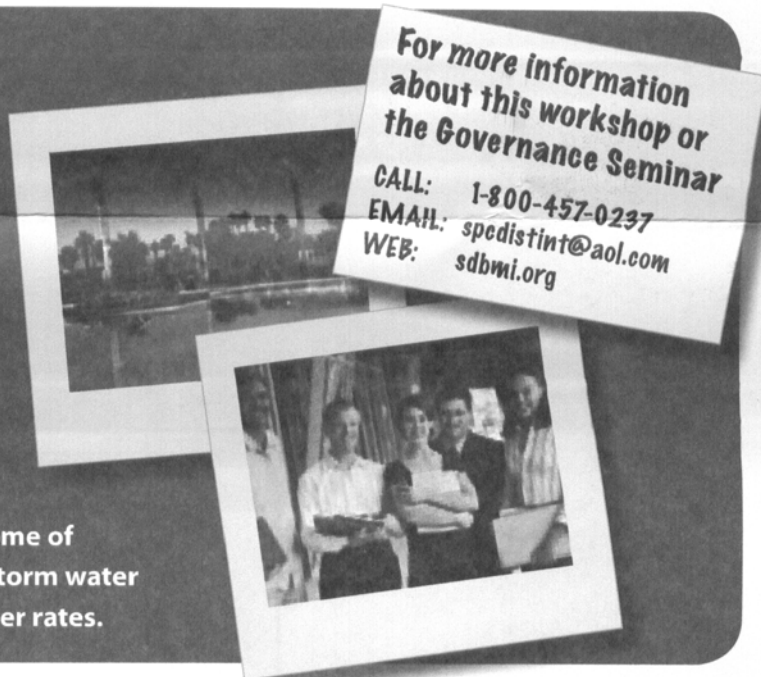
## "TWENTY FIRST CENTURY CHALLENGES TO SUPPLYING WATER"

*Immediately Following the Two-Day Governance Seminar*

HUNTINGTON BEACH, SATURDAY, MARCH 6, 2010

**Saturday Workshop** 1:00 to 3:15  
**Q&A Session** 3:15 to 4:00  
**Lunch (Optional \$18)** 12:00 to 1:00

The workshop will provide a broad spectrum overview of water rights in California and the most recent water supply challenges in California, including the effects of the statewide drought and court-imposed and regulatory restrictions. The program will also discuss the relationship between water scarcity, water supply planning and analyses, and the land use approval process. Additionally, the panel will discuss how to proactively address some of these water supply issues through recycled water, storm water management, drought management plans, and water rates.



**For more information about this workshop or the Governance Seminar**

**CALL:** 1-800-457-0237  
**EMAIL:** [spedistint@aol.com](mailto:spedistint@aol.com)  
**WEB:** [sdbmi.org](http://sdbmi.org)

### TOPICS INCLUDE:

- *Current developments in Bay-Delta litigation and regulatory restrictions*
- *Practical tips for coordinating development approvals and city planning efforts with the preparation of Urban Water Management Plans, and preparing Water Supply Assessments and Written Verifications*
- *Insight into preparing defensible CEQA water supply analyses*
- *How to structure conservation-based water rates, and establish and fund drought management programs*
- *Managing water supply sources including recycled water, stormwater, and more.*
- *Discuss new legislation.*

### EXPERTLY PRESENTED BY BEST BEST & KRIEGER:

**Steve Anderson, Partner:**  
*Environmental & Natural Resources, and Water Law*

**Paeter E. Garcia, Associate:**  
*Environmental & Natural Resources, and Water Law*

**Shawn Hagerty, Partner:** *Municipal Law*

**Stefanie Hedlund, Associate:** *Environmental & Natural Resources, Municipal, and Redevelopment Law*

**Kelly J. Salt, of Counsel:** *Public Finance*

**Roderick Walston, Partner:** *Environmental & Natural Resources, Municipal, and Redevelopment Law*

**Provider certifies that this workshop has been approved for Fresh Water Distribution and Fresh Water Treatment continuing education credits.**

Also receive a comprehensive, practical handbook to organize the workshop information.



**Special District and Local Government Institute**

PO Box 2317 • Vista, CA 92085  
800-457-0237 • 760-643-1760  
[spcdistint@aol.com](mailto:spcdistint@aol.com) • [www.sdbmi.com](http://www.sdbmi.com)

# SPECIAL DISTRICT GOVERNANCE SEMINAR AND WORKSHOPS

March 4-6, 2010 – ENROLLMENT FORM

## REGISTER NOW!

*Hyatt Regency Huntington Beach Resort & Spa*

**SPECIAL SDI ROOM RATE (Limited number of rooms blocked)**

*\$155 single/double per room per night good until February 10, 2010*

*Call Hotel Now for Reservations – 1-714-698-1234*

REGISTER FOR EVENT BY PHONE: 800-457-0237 or 760-643-1760, FAX: 760-643-1761

or MAIL: Special District & Local Government Institute, PO Box 2317, Vista, CA 92085

Name: \_\_\_\_\_ District: \_\_\_\_\_

Address: \_\_\_\_\_ City: \_\_\_\_\_ State: \_\_\_\_\_ Zip: \_\_\_\_\_

Phone: \_\_\_\_\_ Fax: \_\_\_\_\_

**\$50 Discount for Groups of 4 or more from the same Organization. Group or early registration discounts good on Options A, B or C including seminar only. Not good with any other discounts.**

- (A) \_\_\_\_\_ \$585 Special District Governance Seminar (Two days)
- (B) \_\_\_\_\_ \$785 Seminar + All Day Workshop (Three days) – Includes One Morning Session: Human Resources \_\_\_\_\_  
OR Ethics Workshop AB 1234 \_\_\_\_\_ and Select One Afternoon Session: Going Green \_\_\_\_\_ OR 21<sup>st</sup>  
Century Challenges to Supplying Water \_\_\_\_\_
- (C) \_\_\_\_\_ \$710 Seminar + Half Day Workshop – Select One Session: Human Resources (AM) \_\_\_\_\_ OR Ethics  
Workshop AB1234 \_\_\_\_\_ OR Afternoon Session: Going Green \_\_\_\_\_ OR 21<sup>st</sup> Century Challenges \_\_\_\_\_
- (D) \_\_\_\_\_ \$225 All Day Workshop – Includes One Morning Session: Human Resources \_\_\_\_\_ OR Ethics Workshop  
AB 1234 \_\_\_\_\_ and Select One Afternoon Session: Going Green \_\_\_\_\_ OR 21<sup>st</sup> Century Challenges \_\_\_\_\_
- (E, F, G,H) \_\_\_\_\_ \$150 Half Day Workshop – Select One Session: Human Resources \_\_\_\_\_ OR Ethics Workshop AB  
1234 \_\_\_\_\_ Going Green \_\_\_\_\_ OR 21<sup>st</sup> Century Challenges to Supplying Water \_\_\_\_\_
- (I) \_\_\_\_\_ \$65 – Binder Only – Human Resources
- (J) \_\_\_\_\_ \$65 – Binder Only – Ethics Workshop AB 1234
- (K) \_\_\_\_\_ \$65 – Binder Only – Going Green
- (L) \_\_\_\_\_ \$65 – Binder Only – 21<sup>st</sup> Century Challenges to Supplying Water
- (M) \_\_\_\_\_ \$100 – Binder Only – Governance Seminar
- (N) \_\_\_\_\_ \$18 Saturday Luncheon for Attendee (Optional)
- \$ \_\_\_\_\_ Early Reg. Discount, \$25 (paid by 2/10/2010) or \$50 for groups of 4 or more – options A, B, C only.
- \$ \_\_\_\_\_ Total Registration Fee (apply any discounts for A,B or C only)

**METHOD OF PAYMENT:**

Check Enclosed

Please Invoice  
PO# \_\_\_\_\_

Charge:  VISA  MasterCard

Card # \_\_\_\_\_ + \_\_\_\_\_

Expiration Date: \_\_\_\_\_

Signature: \_\_\_\_\_

SEE MORE COMPLETE INFORMATION ON WEBSITE ([www.sdbmi.com](http://www.sdbmi.com))